

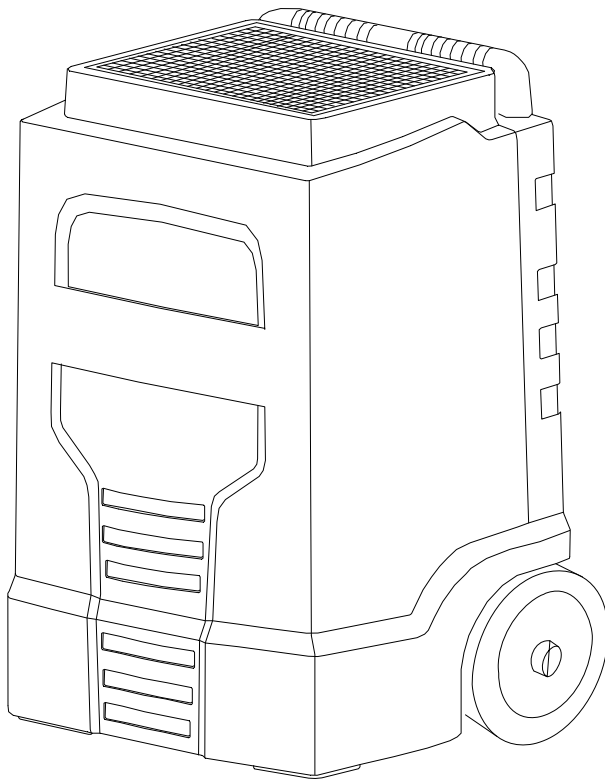
# **CENTURY** **400**™ **CRUSADER**

## **LGR DEHUMIDIFIER**

**Operating instructions (ENG)**

**MODELS: Crusader 75**  
**1.007-905.0**

**Crusader 95**  
**1.007-906.0**



---

Read these instructions before using the machine.



Model:	_____
Date of Purchase:	_____
Serial Number:	_____
Dealer:	_____
Address:	_____
Phone Number:	_____
Sales Representative:	_____

### Overview

The Crusader LGR Dehumidifier is intended for professional disaster restoration and remediation, but can also be used for construction, janitorial / sanitation or other professionals needing to control humidity in an area.

## Warranty Registration

Thank you for purchasing a C400 product. Warranty registration is quick and easy. Your registration will allow us to serve you better over the lifetime of the product.

To register your product go to :

[www.century400.com/support/warranty/register.php](http://www.century400.com/support/warranty/register.php)

For customer assistance:

1-800-776-2436



**Machine Data Label** .....2  
 Overview .....2  
**Table of Contents** .....3  
**How To Use This Manual** .....4

*Safety*

IMPORTANT SAFETY INSTRUCTIONS .....5  
 CONSIGNES IMPORTANTES DE SÉCURITÉ ...6  
 HAZARD INTENSITY LEVEL .....7  
 DEGRÉS DE RISQUES EN CAS DE DANGER...8  
 115V Grounding Instructions .....9  
 Technical Specifications .....10

*Operations*

Components .....11  
 Controls .....12  
 Machine Function .....13  
 Malfunction Indicators .....13  
 How to Transport Dehumidifier .....13  
 Cord Storage .....13  
 Storing in Warehouse and in Delivery Truck: .....13  
 Operating Dehumidifier .....14  
 Purging Dehumidifier .....14  
 Service Schedule .....15  
 Cleaning Dehumidifier .....15  
 Replace Condensate Pump .....16  
 Fan Replacement .....16  
 Thermistor Replacement .....16  
 Troubleshooting .....17

*Parts*

Parts List ..... 20

## How To Use This Manual

This manual contains the following sections:

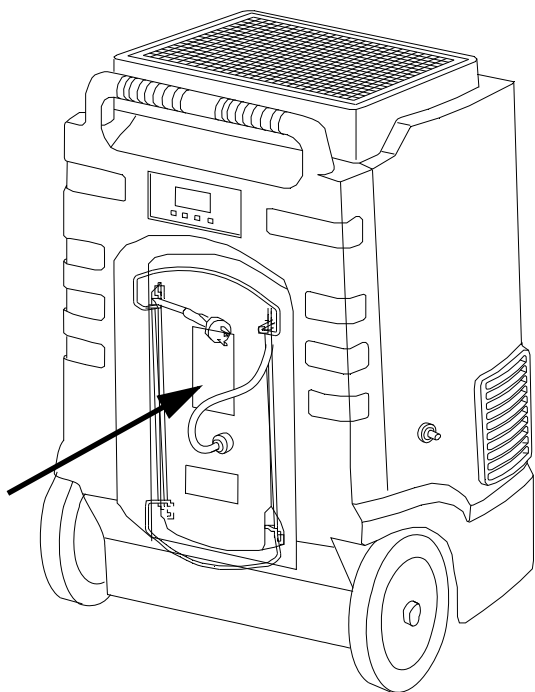
- How to Use This Manual
- Safety
- Operations
- Maintenance
- Parts List

The HOW TO USE THIS MANUAL section will tell you how to find important information for ordering correct repair parts.

Parts may be ordered from authorized dealers. When placing an order for parts, the machine model and machine serial number are important. Refer to the MACHINE DATA box which is filled out during the installation of your machine. The MACHINE DATA box is located on the inside of the front cover of this manual.

Model:	_____
Date of Purchase:	_____
Serial Number:	_____
Dealer:	_____
Address:	_____
Phone Number:	_____
Sales Representative:	_____

The model and serial number of your machine is located on the back of the machine.



The SAFETY section contains important information regarding hazardous or unsafe practices of the machine. Levels of hazards are identified that could result in product damage, personal injury, or severe injury resulting in death.

The OPERATIONS section is to familiarize the operator with the operation and function of the machine.

The MAINTENANCE section contains preventive maintenance to keep the machine and its components in good working condition. They are listed in this general order:

- Storage
- Maintenance
- Troubleshooting

The PARTS LIST section contains assembled parts illustrations and corresponding parts list. The parts lists include a number of columns of information:

- **REF** – column refers to the reference number on the parts illustration.
- **PART NO.** – column lists the part number for the part.
- **PRV NO.** – reference number.
- **QTY** – column lists the quantity of the part used in that area of the machine.
- **DESCRIPTION** – column is a brief description of the part.
- **SERIAL NO. FROM** – If this column has an (\*) and a Reference number, see the SERIAL NUMBERS page in the back of your manual. If column has two asterisk (\*\*), call manufacturer for serial number. The serial number indicates the first machine the part number is applicable to. The main illustration shows the most current design of the machine. When a boxed illustration is shown, it displays the older design.
- **NOTES** – column for information not noted by the other columns.

*NOTE: If a service or option kit is installed on your machine, be sure to keep the KIT INSTRUCTIONS which came with the kit. It contains replacement parts numbers needed for ordering future parts.*

*The manual part number is located on the lower left corner of the front cover.*

## IMPORTANT SAFETY INSTRUCTIONS

When using this machine, basic precaution  
must always be followed, including the following:

**READ ALL INSTRUCTIONS BEFORE USING THIS MACHINE.**

**⚠ WARNING:** To reduce the risk of fire, electric shock, or injury:

Use only indoors. Do not use outdoors or expose to rain or water.

Use only as described in this manual. Use only manufacturer's recommended components and attachments.

Do not operate the machine with any openings blocked. Keep openings free of debris that may reduce airflow.

Do not operate this machine near flammable fluids, dust or vapors.

Maintenance and repairs must be done by qualified personnel.

The machine shall only be operated by instructed and authorized persons.

Do not handle the plug or machine with wet hands.

Do not unplug machine by pulling on cord. To unplug, grasp the plug, not the cord.

Do not use with damaged cord or plug.

Do not pull or carry by cord, use cord as a handle, run over cord, close a door on cord, or pull cord around sharp edges or corners.

Connect to a properly grounded outlet.

Connect only to an outlet provided with a ground fault circuit interrupting device (GFCI).

Do not use this dehumidifier with any solid-state speed control device.

Never service or clean the unit while plugged in.

Do not operate without safety guards properly installed and secured.

## READ AND SAVE THESE INSTRUCTIONS

# CONSIGNES IMPORTANTES DE SÉCURITÉ

Lors de l'utilisation d'un appareil électrique, il faut toujours observer des précautions élémentaires, qui comprennent parmi celles-ci:

**LISEZ BIEN L'ENSEMBLE DES CONSIGNES AVANT D'UTILISER CET APPAREIL.**

## **⚠ AVERTISSEMENT:**

Utilisez-le exclusivement dans des endroits fermés. Ne l'utilisez pas en plein air et ne le laissez pas sous la pluie.

Utilisez-le exclusivement de la manière décrite dans ce manuel. Utilisez exclusivement les composants et les fixations recommandés par le fabricant.

Ne faites pas fonctionner l'appareil si des ouvertures sont bouchées. Dégagez des ouvertures tous débris susceptibles d'entraver le passage de l'air.

Ne faites pas fonctionner cet appareil à proximité de fluides, de poussières ou de vapeurs inflammables.

Les travaux de maintenance et de réparation doivent absolument être effectués par du personnel qualifié.

L'utilisation de l'appareil est exclusivement réservée à des personnes formées et autorisées.

Ne manipulez pas la fiche ou l'appareil les mains mouillées.

Ne débranchez pas l'appareil en tirant sur le cordon. Pour le débrancher, empoignez la fiche, non pas le cordon.

N'utilisez pas l'appareil si le cordon ou la fiche est endommagé(e). Observez toutes les consignes figurant dans ce manuel au sujet de la mise à la terre de l'appareil.

Ne tirez pas sur le cordon, ne portez pas l'appareil par le cordon, n'utilisez pas le cordon comme poignée, ne fermez pas une porte sur le cordon, ne tirez pas sur le cordon dans des angles ou des coins pointus.

Raccordez l'appareil à une prise adéquatement reliée à la terre. Voir les Consignes de mise à la terre.

Utilisez-le uniquement sur des réceptacles protégés GFCI.

N'utilisez pas ce déhumidifieur avec quelconque dispositif de contrôle de la vitesse à l'état solide.

Ne jamais entretenir ou nettoyer l'unité pendant qu'a branché sur.

Ne pas fonctionner sans les gardes de sécurité convenablement installés et obtenus.

## **CONSERVEZ CES CONSIGNES**

The following symbols are used throughout this guide as indicated in their descriptions:

## HAZARD INTENSITY LEVEL

There are three levels of hazard intensity identified by signal words -**WARNING** and **CAUTION** and **FOR SAFETY**. The level of hazard intensity is determined by the following definitions:

### **WARNING:**

**WARNING** - Hazards or unsafe practices which COULD result in severe personal injury or death.

### **CAUTION:**

**CAUTION** - Hazards or unsafe practices which could result in minor personal injury or product or property damage.

**FOR SAFETY: To Identify actions which must be followed for safe operation of equipment.**

Report machine damage or faulty operation immediately. Do not use the machine if it is not in proper operating condition. Following is information that signals some potentially dangerous conditions to the operator or the equipment. Read this information carefully. Know when these conditions can exist. Locate all safety devices on the machine. Please take the necessary steps to train the machine operating personnel.

#### **FOR SAFETY:**

##### **DO NOT OPERATE MACHINE:**

Unless Trained and Authorized.

Unless Operation Guide is Read and understood.

In Flammable or Explosive areas.

In areas with possible falling objects.

##### **WHEN SERVICING MACHINE:**

**Avoid moving parts. Do not wear loose clothing; jackets, shirts, or sleeves when working on the machine.**

**Use only manufacturer approved replacement parts**

Les symboles ci-dessous sont utilisés à travers ce manuel comme illustré dans leurs descriptions:

## DEGRÉS DE RISQUES EN CAS DE DANGER

Il existe trois degrés de risques identifiés par les termes signalétiques -**AVERTISSEMENT** et **ATTENTION** et **POUR VOTRE SÉCURITÉ**. Le degré de risque est défini de la manière suivante:

### **⚠ AVERTISSEMENT:**

**AVERTISSEMENT** - Dangers ou méthodes dangereuses qui **POURRAIENT** provoquer de graves blessures ou entraîner la mort.

### **⚠ ATTENTION:**

**ATTENTION** - Dangers ou méthodes dangereuses qui pourraient provoquer des blessures légères ou une détérioration du produit ou des biens immobiliers.

**POUR VOTRE SÉCURITÉ: ce signe permet d'identifier les mesures de précaution à prendre pour assurer un bon fonctionnement du matériel.**

Rendre compte immédiatement d'une défaillance ou d'une détérioration de la machine. Ne pas utiliser la machine si celle-ci ne fonctionne pas correctement. Lire soigneusement les informations ci-dessous signalant certains dangers potentiels pour l'opérateur de la machine. L'opérateur doit être absolument au courant de ces dangers potentiels. Localiser tous les dispositifs de sécurité sur la machine. Il est conseillé de prendre les mesures nécessaires pour former le personnel opérateur.

### **POUR VOTRE SÉCURITÉ:**

**NE PAS MANOEUVRER LA MACHINE:**

Lorsqu'on n'est pas expérimenté ou qualifié.

Lorsque le guide d'utilisation n'est pas été lu ou compris.

Dans des zones inflammables ou explosives.

Dans des zones où des objets peuvent tomber.

### **LORS DE L'ENTRETIEN DE LA MACHINE:**

**Éviter les parties amovibles. Ne pas porter de vêtements amples, tels que des vestes, des chemises ou des vêtements avec manches lors de l'utilisation de la machine. Utiliser les pièces détachées Windsor homologuées.**



## 115V Grounding Instructions

### ELECTRICAL:

In the USA this machine operates on a standard 15 amp 115V, 60 hz, A.C. power circuit. The amp, hertz, and voltage are listed on the data label found on each machine. Using voltages above or below those indicated on the data label will cause serious damage to the machine.

### EXTENSION CORDS:

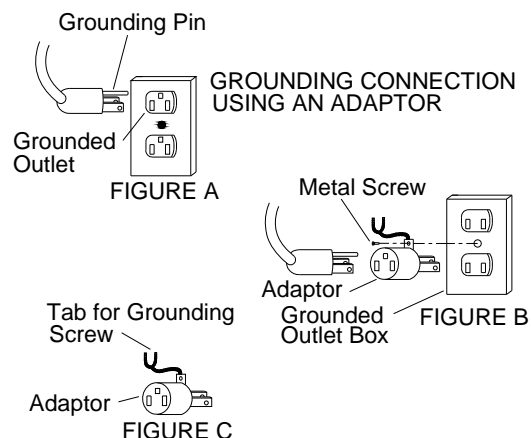
If an extension cord is used, the wire size must be at least one size larger than the power cord on the machine, and must be limited to 50 feet (15.5m) in length.

### GROUNDING INSTRUCTIONS:

This appliance must be grounded. If it should malfunction or break down, grounding provides a path of least resistance for electric current to reduce the risk of electric shock. This appliance is equipped with a cord having an equipment-grounding conductor and grounding plug. The plug must be inserted into an appropriate outlet that is properly installed and grounded in accordance with all local codes and ordinances.

This appliance is for use on a nominal 120-volt circuit, and has a grounded plug that looks like the plug in "Fig. A". A temporary adaptor that looks like the adaptor in "Fig. C" may be used to connect this plug to a 2-pole receptacle as shown in "Fig. B", if a properly grounded outlet is not available. The temporary adaptor should be used only until a properly grounded outlet (Fig. A) can be installed by a qualified electrician. The green colored rigid ear, lug, or the like extending from the adaptor must be connected to a permanent ground such as a properly grounded outlet box cover.

Whenever the adaptor is used, it must be held in place by a metal screw.



Note: Adaptors are not allowed in Canada.

### **⚠ WARNING:**

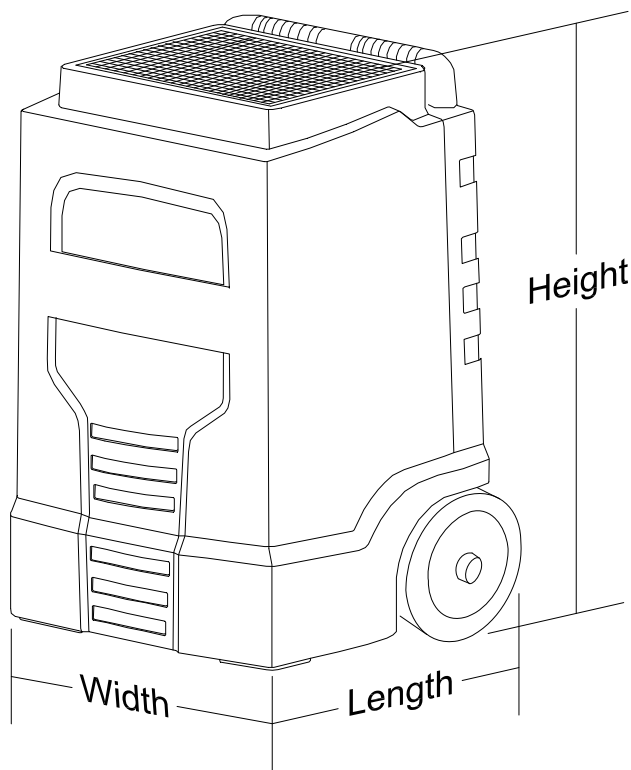
***Improper connection of the equipment-grounding conductor can result in a risk of electric shock. Check with a qualified electrician or service person if you are in doubt as to whether the outlet is properly grounded. Do not modify the plug provided with the appliance - if it will not fit the outlet, have a proper outlet installed by a qualified electrician. Use only GFCI protected receptacles.***

### **⚠ AVERTISSEMENT:**

***Le raccordement incorrect du conducteur de terre d'équipement peut entraîner des risques d'électrocution. Vérifiez auprès d'un électricien qualifié ou d'un responsable de l'entretien si vous avez quelque doute que ce soit quant au raccordement à la terre de votre prise murale. Ne modifiez pas la fiche fournie avec l'appareil : si elle ne correspond pas à la prise murale, faites installer une prise adéquate par un électricien qualifié. Utilisez-le uniquement sur des réceptacles protégés GFCI.***

**Technical Specifications**

ITEM	MEASURE
Height	37.7 In (96 cm)
Length	24 In (61 cm)
Width	22.8 In (58 cm)
Weight	
Crusader 75	119 Lbs (54 kg)
Crusader 95	126 Lbs (57 kg)
Cord	25' X 14 Gauge / 3 Wire Black
Body Construction	Rotationally Molded Polyethylene
Frame Construction	Powder Coated Steel
Refrigerant	R410A
Water extraction / Day	
Crusader 75	75 pints/day ( RH60%)
Crusader 95	95 pints/day ( RH60%)
Max Process Air rate - pressures	335CFM / 570 mH - 1.65 MPa (Suction) 3.1 MPa (Discharge)
<b>Electrical</b>	
Crusader 75	6.9 Amps @ 110 / 120 VAC 60 Hz
Crusader 95	7.8 Amps @ 110 / 120 VAC 60 Hz

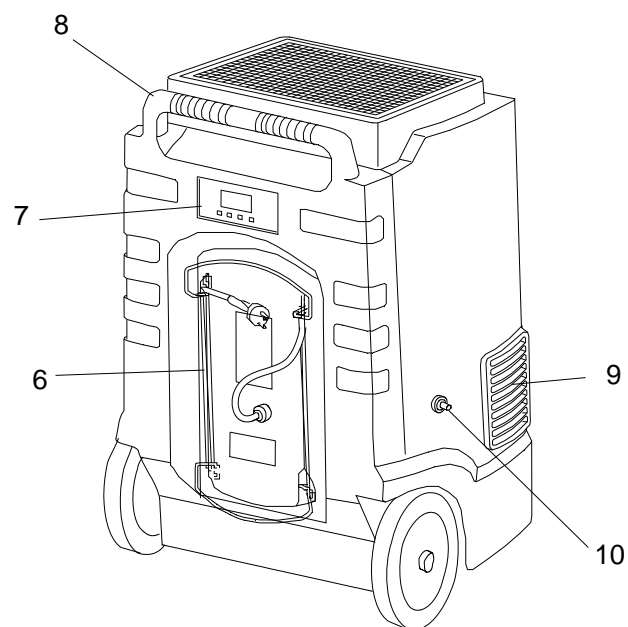
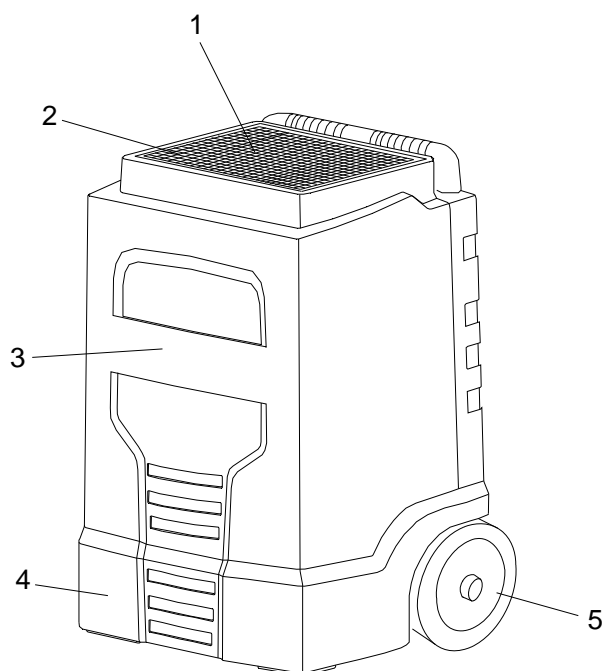


**SPECIAL NOTES:**

This appliance is not intended for use by persons (including children) with reduced physical, sensory or mental capabilities, or lack of experience and knowledge, unless they have been given supervision or instruction concerning use of the appliance by a person responsible for their safety. Children should be supervised to ensure that they do not play with the appliance.

The ambient sound pressure level was measured to be 60 dB(A). This was a nearfield, broadband measurement taken in a typical industrial environment on a tile floor.

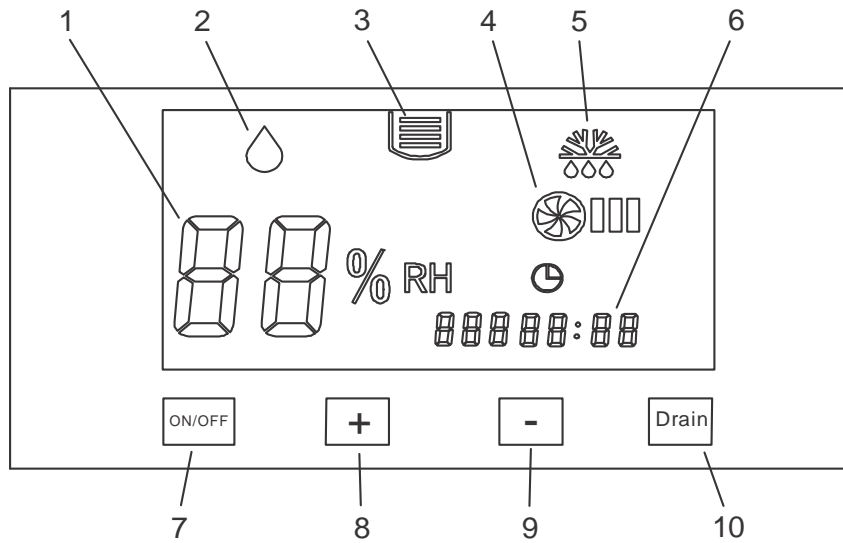
## Components



- 1. FILTER COVER
- 2. FILTER
- 3. UPPER HOUSING
- 4. LOWER HOUSING
- 5. WHEELS

- 6. CORD STORAGE
- 7. CONTROL PANEL
- 8. HANDLE
- 9. EXHAUST OUTLET
- 10. WATER OUTLET

Controls



1. Humidity level
2. Dehumidify
3. Water Full
4. Fan
5. Defrost mode
6. Machine run time
7. ON / OFF: Dehumidifier power switch.
8. Humidity Up: When machine runs on dehumidify mode, each time the Humidity Up button is pressed, it raises the humidity 1%. When the Humidity Up button is pressed for 2 seconds, humidity is raised by 5% per second.
9. Humidity Down: When machine runs on dehumidify mode, each time the Humidity Down button is pressed, it lowers the humidity 1%. When the Humidity Down button is pressed for 2 seconds, humidity is lowered by 5% per second.
10. Drain: press Drain button to empty water in pump automatically.

## Machine Function

The machine's default humidity setting is 60%, and the machine's dehumidifying range is 30%-90%. Use Humidity Down and Humidity Up buttons on panel to adjust humidity setting. If the Humidity Down button is pressed when the displayed humidity is 30%, the machine will enter into continuous dehumidify mode and display "CO". The humidity % will flash when setting humidity % and then display current humidity after 5 seconds. When the room humidity is 3% lower than the humidity set on the machine, the compressor stops, the fan motor runs, and Dehumidify will flash. When room humidity is 3% higher than set on the machine, the compressor and fan motor runs and Dehumidify will illuminate.

The compressor has a protect function. It will restart the compressor 3 minutes after it stops working, then Dehumidify will flash.

When the room temperature is low, the machine runs the Auto-Defrost function. When defrosting, the compressor runs, but the fan motor is off, the Defrost light is on, and the Fan light is off. When defrosting is complete, the defrost icon turns off.

When the water tank is full, the pump starts to discharge the water. If the pump stops, E4 will be displayed.

"Machine run time" on display shows how much time the machine has operated. This number is calculated every ten minutes, and the first ten minutes after the machine is started are not calculated.

## Malfunction Indicators

If the machine detects a fault, the following codes will be displayed:

Display	Explanation
E3	Humidity Sensor is malfunctioning
E4	Pump is malfunctioning
E5	Thermistor is malfunctioning

## How to Transport Dehumidifier

1. Wrap the power cord in provided storage area on back of machine.
2. Tilt on back wheels.
3. Pull by handle.
4. Place the machine back down on its base.

## Cord Storage

1. Turn off machine.
2. Working from machine to cord plug end, lay cord out straight, remove any twists as you go.
3. Coil the cord around the cord hooks at the back of the machine.

## Storing in Warehouse and in Delivery Truck:

Dehumidifiers should always be stored and transported in an upright position. If the dehumidifier is transported in a horizontal position, upon being set upright the machine should not be operated for 30 minutes. Always store the dehumidifier inside away from weather, in an area not exposed to excessive heat or cold.

## Operating Dehumidifier

### **⚠ CAUTION:**

***Never allow anything to block intake airflow. Be careful of objects which could be drawn against intake. The dehumidifier must sit on a level surface. Always position and orient machine before turning on.***

### **⚠ ATTENTION:**

***Ne permettez jamais à quoi que ce soit de bloquer l'entrée d'air. Faites attention aux objets qui pourraient être attirés contre l'entrée d'air. Le déshumidifieur doit reposer sur une surface de niveau. Dirigez et orientez toujours le déshumidifieur avant de l'allumer.***

For best results, operate dehumidifier in enclosed space. Close all exterior doors and windows. Keep traffic through drying area to a minimum

1. Connect drain hose to condensate pump's quick connect fitting.
2. Uncoil and straighten entire hose; to prevent water backing up to pump and leaking.
3. Place other end in a sink drain bucket or outside, no more than 10 ft above pump.

*NOTE: If a bucket or other receptacle is used for water collection, check and empty regularly to prevent spills.*

4. Plug in electrical cord into 115 volt GFCI protected outlet rated for minimum 15 amps.
5. Turn the machine on.

## Purging Dehumidifier

1. After space reaches desired humidity level, press the drain button. This manually empties water from the condensate pump reservoir.
2. Disconnect drain hose.

*The drain hose will be full of water. Take precautions to avoid spilling in undesirable areas.*

## Service Schedule

<b>Power Cord</b>	Daily	Inspect for wear, fraying or cuts.
<b>Filter</b>	Daily	Inspect, vacuum up to 3 times, replace as needed
<b>Coils</b>	Monthly	Inspect, clean when visibly dirty
<b>Heat Exchange Block</b>	Monthly	Inspect, clean with compressed air only when needed.
<b>Condensate Pump</b>	Monthly	Inspect, clean when needed.
<b>Condensate Drip Tray</b>	Monthly	Inspect, clean when needed.

## Cleaning Dehumidifier

### **⚠ WARNING:**

*Do not perform any cleaning operations with the unit plugged into power.*

*N'effectuez aucun nettoyage avec l'unité branchée à la source d'alimentation électrique.*

To maximize dehumidifier performance, replace the air filter often and clean the internal components when they become dirty.

1. Unplug machine from power.
2. Remove drain tube from machine.
3. Remove the two upper screws on each side of the machine, and the four upper screws on the back of the machine.
4. Remove the filter to ease lifting the upper housing. Lift the upper housing up and forward. The sides of the housing must be flared out to prevent interference with the cassette.
5. Remove the condensate hose from the hosebarb on the inside of the upper housing.
6. Disconnect the control panel wires from the display board.
7. Remove the lower back screws and lower side screws. To access the screws behind the wheels, remove the wheels.
8. Turn the cord strain relief to loosen the cord connection. Push the power cord into the cassette, to allow the cassette to be removed.
9. Lift the cassette out of the lower housing.

### **⚠ CAUTION:**

*Do not use high pressure water to clean any of the internal components of the dehumidifier.*

*N'utilisez pas l'eau à haute pression pour nettoyer les composants internes du déshumidificateur.*

10. Inspect all internal components for debris buildup.
11. If necessary use a foaming refrigerant coil cleaner to clean the evaporator and condenser.
12. Wash the air-to-air heat exchanger and any other internal components that have debris buildup with warm soapy water.

### Replace Condensate Pump

The condensate pump removes water that collects in the reservoir.

1. Unplug machine from power.
  2. Remove drain tube from machine.
  3. Remove the two upper screws on each side of the machine, and the four upper screws on the back of the machine.
  4. Remove the filter to ease lifting the upper housing. Lift the upper housing up and forward. the sides of the housing must be flared out to prevent interference with the cassette.
  5. Remove the condensate hose from the hosebarb on the inside of the upper housing.
  6. Disconnect the control panel wires from the display board.
  7. Remove the lower back screws and lower side screws. To access the screws behind the wheels, remove the wheels.
  8. Turn the cord strain relief to loosen the cord connection. Push the power cord into the cassette, to allow the cassette to be removed.
  9. Lift the cassette out of the lower housing.
  10. Disconnect pump wiring.
  11. Remove and replace the pump .
4. Remove the filter to ease lifting the upper housing. Lift the upper housing up and forward. the sides of the housing must be flared out to prevent interference with the cassette.
  5. Remove the condensate hose from the hosebarb on the inside of the upper housing.
  6. Disconnect the control panel wires from the display board.
  7. Remove the lower back screws and lower side screws. To access the screws behind the wheels, remove the wheels.
  8. Turn the cord strain relief to loosen the cord connection. Push the power cord into the cassette, to allow the cassette to be removed.
  9. Lift the cassette out of the lower housing.
  10. Remove the fan.
  11. Reassemble the new fan using the above procedure in reverse.

### Fan Replacement

The motorized impeller has internal thermal overload protection. If defective, the complete assembly must be replaced.

1. Unplug machine from power.
2. Remove drain tube from machine.
3. Remove the two upper screws on each side of the machine, and the four upper screws on the back of the machine.

### Thermistor Replacement

The defrost thermistor is attached to the refrigerant suction line between the accumulator and the evaporator.

1. Unplug machine from power.
2. Remove drain tube from machine.
3. Remove the two upper screws on each side of the machine, and the four upper screws on the back of the machine.
4. Remove the filter to ease lifting the upper housing. Lift the upper housing up and forward. the sides of the housing must be flared out to prevent interference with the cassette.
5. Remove the condensate hose from the hosebarb on the inside of the upper housing.
6. Replace thermistor.
7. Reassemble the dehumidifier in reverse order of the above steps.



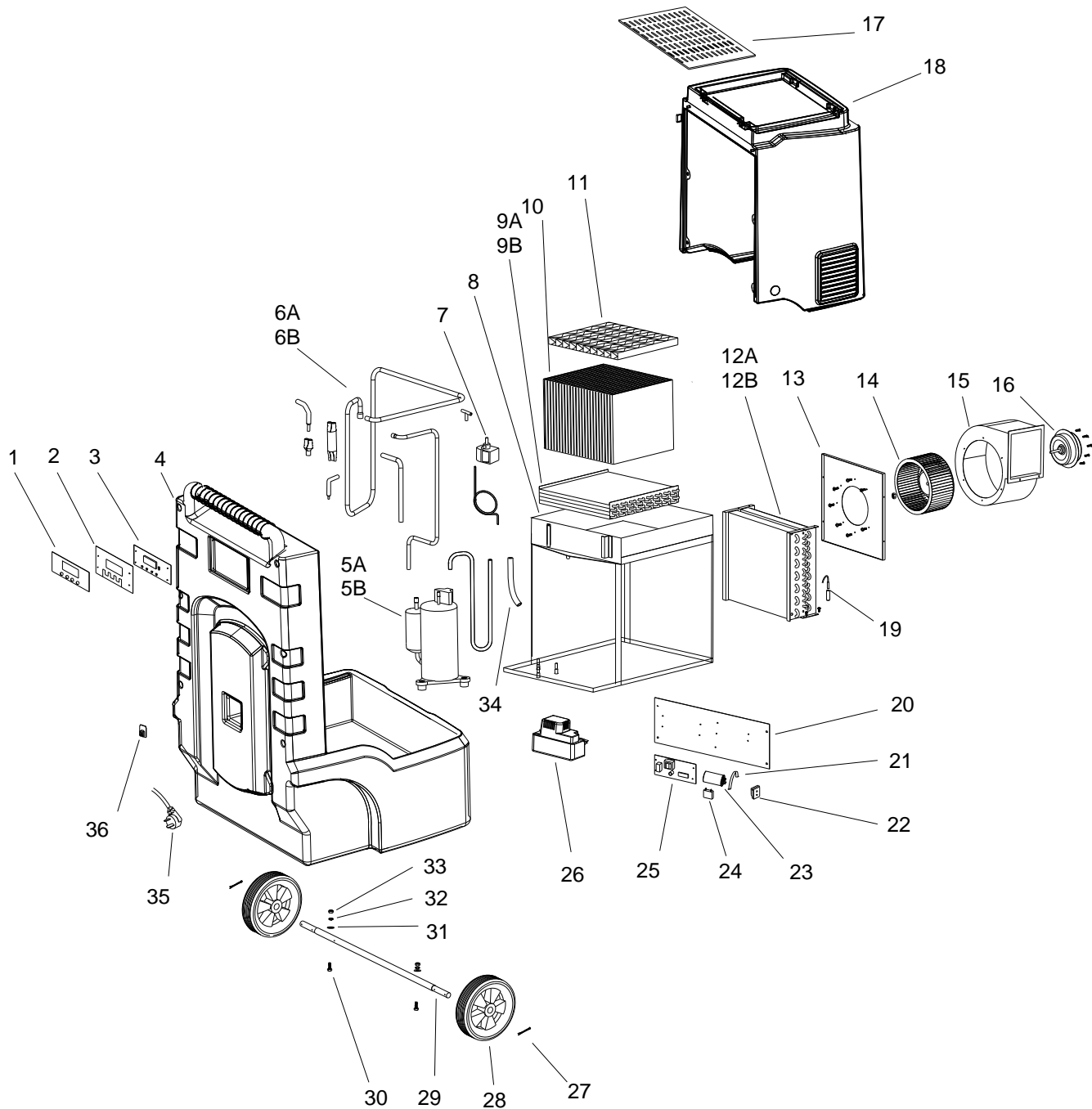
## Troubleshooting

PROBLEM	CAUSE	SOLUTION
<b>Nothing runs</b>	Defective control board	Replace control board.
	Loose connection in internal wiring	Find and repair loose connection.
<b>Coils don't get hot and cold</b>	Compressor is not running.	See compressor doesn't run.
	Leak in system / refrigerant gone.	Find Leak, Repair, Recharge system.
<b>Compressor doesn't run</b>	Bad connection in compressor circuit.	Find and repair bad connection.
	Defective compressor capacitor.	Replace compressor capacitor.
	Defective compressor overload.	Replace compressor overload.
	Defective compressor.	Replace compressor.
	Defective control board.	Replace control board.
	Defective relay.	Replace relay.
	Ambient temperature is too low.	Move the machine to a warmer area.
<b>Fan doesn't run</b>	Defective fan.	Replace impeller fan.
	Bad connection in blower circuit.	Find and repair bad connection
	Obstruction blocking impeller motion.	Remove blockage.
<b>Machine doesn't extract as much water as expected</b>	Air Temperature / Humidity has dropped.	Retest Temperature / Humidity, Recalculate
	Machine has entered defrost cycle.	Wait 1 hour recheck.
	Dirty air filter.	Clean / Replace filter
	Frosted coils.	Check / Replace thermister or control board.
	Dirty coils.	Clean coils
	Low refrigerant charge.	Find Leak, Repair, Recharge system.
	Defective compressor.	Replace compressor.
	Restricted exhaust or inlet.	Unblock inlet and outlet.
<b>Water drips from machine</b>	Condensate pump is defective.	Replace pump.
	Pump check valve is plugged.	Unplug valve.
	Bad connection in pump circuit.	Find and repair bad connection
	Hose is disconnected internally.	Reconnect hose.
	Defective control board.	Replace control board.
<b>Compressor, pump or fan runs when power switch is OFF</b>	Incorrect wiring.	Repair wiring.
<b>Loud / Unusual noise</b>	Machine is not on a level surface.	Place the machine on a level surface.

*Notes:*

---

# PARTS



REF	PART NO.	DESCRIPTION	SERIAL NO. FROM	NOTES
1	86356400	PVC FILM		
2	86356410	DISPLAY PANEL BRACKET		
3	86356420	DISPLAY BOARD		
4	86356430	LOWER HOUSING		
5A	86356440	COMPRESSOR 75 PINT		CRUSADER 75 ONLY
5B	86356450	COMPRESSOR 95 PINT		CRUSADER 95 ONLY
6A	86356460	COPPER TUBE (CAPILLARY TUBE) 75 PINT		CRUSADER 75 ONLY
6B	86356470	COPPER TUBE (CAPILLARY TUBE) 95 PINT		CRUSADER 95 ONLY
7	86356480	MAGNET VALVE		
8	86356490	CHASSIS COMPONENTS		
9A	86356500	EVAPORATOR 75 pint		CRUSADER 75 ONLY
9B	86356510	EVAPORATOR 95 pint		CRUSADER 95 ONLY
10	86356520	HEAT EXCHANGER		
11	86356530	FILTER		
12A	86356540	CONDENSER 75 pint		CRUSADER 75 ONLY
12B	86356550	CONDENSER 95 pint		CRUSADER 95 ONLY
13	86356560	AIR DUCT BOARD		
14	86356570	BLADE		
15	86356580	VOLUTE CASING		
16	86356590	MOTOR		
17	86356600	FILTER COVER		
18	86356610	UPPER HOUSING		
19	86356620	TEMPERATURE SENSOR		
20	86356630	ELECTRICAL MOUNTING BOARD		
21	86356640	CAPACITOR CLAMP		
22	86356650	WIRE CONNECTION SEAT		
23	86356660	COMPRESSOR CAPACITOR		
24	86356670	MOTOR CAPACITOR		
25	86356680	PCB BOARD		
26	86356690	PUMP		
27	86356700	SPLIT PIN		
28	86356710	WHEEL		
29	86356720	AXLE		
30	86356730	SCR, M6 X 45 PHMS SS		
31	86331800	NUT, M6 NYLOCK, SS		
32	86013850	WASHER, M6, FNDR, ISO7093, SS		
33	86173310	WASHER, SPRNG LK, M6, DIN127B, SST		
34	86356770	HOSE		
35	86356780	POWER SUPPLY CORD		
36	86356790	HUMIDITY SENSOR		