



SERVICE MANUAL PARTS LIST

BURNISHER

MODELS:

B-1500-C



SERVICE

KOBLENZ ELECTRICA S.A. DE C.V.
E-mail: thorne_scm@koblenz-electric.com

September-09
LP-BUR-200909

INDEX

	PAGE
I.- FINAL TEST PRODUCT SAFETY	3
II.- REPLACEMENT PROCEDURES ASSEMBLY	3
III.- TROUBLE SHOOTING CHART	6
IV.- ELECTRICAL RATING	7
V.- WIRING DIAGRAM	7
VI.- PARTS LIST	8
VII.- ASSEMBLY	11

I. FINAL TEST FOR PRODUCT SAFETY

AT THE COMPLETION OF ANY REPAIR THE PRODUCT SHOULD BE ELECTRICALLY TESTED FOR OPERATING AND ELECTRIC TEST AS FOLLOWS

ELECTRIC TEST

- A). - Set hi-pot meter at 1500 V
- B): -Place Switch Lock to on position.
- c). -Touch one probes of tester to on blade of power cord plug and touch other probe to handle tube. There should be no breakdown.

OPERATING TEST

RUN THE MACHINE ON HARD SURFACE WITH BRUSH OR PAD AND MAKE SURE:

- A). - THERE IS NO UNUSUAL NOISE OR VIBRATION
- B). - THE MOTOR STARTS FAST AND WITHOUT NOISE
- C). - THE CURRENT DRAW IS LESS THAN 15 AMP.

II. - REPLACEMENT PROCEDURES ASSEMBLY

1. - INDUCTION MOTOR ASSEMBLY REPLACEMENT (8)

- 1.1.-Disconnect the line cord (3) from the motor line cord (97)
- 1.2. - Place the burnisher in face down position. Unscrew the center driver (45) counterclockwise the three screws (44) as well as the base fix (43)
- 1.3.-Remove the six screws (43) the flex base (42) the five screws (41) five washers (40) and the plate (61)
- 1.4.-Loosen the four screws (32) pull the motor from the pulley disc (29-D) remove the belt
- 1.5.-Remove the Allen screw (34) the motor pulley (35) as well as the locking pin (33) place the burnisher in vertical position and remove the handle tube assembly.
- 1.6.-Remove the three screws (14) lift the motor cover (4) remove the connection box from the motor, and disconnect the three terminals of the motor line cord assembly (3) and remove the motor cover (4).
- 1.7.-Remove the bumper of the motor cover (6) the four screws (11), the two capacitor covers (12), the two capacitor insulators (10), disconnect the two capacitors (9 and 15)
- 1.8.-Place the burnisher in face down, remove the four screws (32) the washer (31) as well as the four washers (30)
- 1.9.-Remove the motor (8)
- 1.10.-Replace the motor assembly (8) and reassemble

NOTE: When replacing the motor, make sure the replacement part the same features. It's also important that both should be connected as initially placed in order to avoid damages in the motor and alignment from pulleys.

2.- BELT REPLACEMENT (36)

- 2.1. - Follow steps indicated on point 1.2, 1.3 and 1.4
- 2.2. - Replace belt (36) and reassemble make sure that the pulleys aligned

3. - PULLEY AXLE REPLACEMENT (26)

- 3.1. - Follow steps 1.2, 1.3, and 1.4
- 3.2. - Remove the nylon nut (39) the split lock washer(38) and flat washer (37)
- 3.3.- Remove the pulley flex disc (29-D) which is assembled with two bearings (29-B) the spacer (29-C) and the clamp (29-A)
- 3.4. - Remove the four nuts (28) the split lock washer (27) remove the pulley axle and reassemble it nuts.

NOTE: Pulley axle (26) and chassis (25) bolt holes can be assembled one way only, therefore if the bolt holes are not aligned when attaching the pulley axle to the chassis, rotate the pulley axle until the holes are aligned and allow the four screws (24) to pass freely

4.-BEARING REPLACEMENT (29-B)

- 4.1. - Follow steps 1.2, 1.3 and 1.4
- 4.2. - Follow steps 3.2, and 3.3
- 4.3. - Remove the clamp (29-A) the two bearings (29-B) as well as the bearing separator.
- 4.4. - Replace the two bearings, and reassemble.

5.-STARTING LEVER REPLACEMENTS (93)

- 5.1. - Remove the two screw (82) and two washers (81)
- 5.2. - Remove the screw (73A) and secure button (73-B).
- 5.3. - Remove the switch box cover (75)
- 5.4. - Remove the two screws(80) and two springs (92)
- 5.5. - Replace the ON-OFF handle, and reassemble it.

6. - MICRO SWITCH STARTING LEVER REPLACEMENT (85)

- 6.1. - Follow Steps 5.1, 5.2 and 5.3
- 6.2. - Disconnect the micro switch
- 6.3. - Remove the two screws (86) and two washers (87)
- 6.4. - Remove and replace the micro switch and switch insulator (79) as originally assembled.

7. - ASSEMBLY SECURITY BUTTON REPLACEMENT (73B)

- 7.1. - Follow steps 5,1, 5,2 and 5,3.
- 7.2. - Remove the secure assembly and replace the component damaged,and reassemble it.

8. - LINE CORD REPLACEMENT (91)

- 8.1. - Follow steps 5.1, 5.2 and 5.3
- 8.2. - Disconnect the terminal (green) from the micro switch (85) and the cable switch assembly (70) connected to the thermal protector (77)
- 8.3. - With a Heyco wrench, remove the grommet (90) and washer (94) remove the motor lead assembly (91) as well as the grommet line tube (96)
- 8.4. - Replace the motor lead by inserting the handle assembly (88) upwards and previously placing the grommet tube (96)
- 8.5. - Place the washer (94) as well as the grommet (90) at the same distance as the prior lead, connect and reassemble as initially placed.

9. - LINE CORD REPLACEMENT (105)

9.1.-Follow steps 5.1, 5.2 and 5.3.

9.2. - Disconnect ground (green) as well as connection micro switch (85) and the connect to thermal protector (77)

9.3.-Remove the nut from the effort relief assembly (103)

9.4. - Replace line cord, connect and reassemble as initially placed

10. -PLATE ASSEMBLY REPLACEMENT (61)

10.1. - Follow steps indicated on point 1.2, 1.3 and 1.4

10.2. - Replace the plate assembly and reassemble

11. - EARRING BRUSH ASSEMBLY REPLACEMENT(67)

11.1. - Follow steps indicated on point 1.2, 1.3 and 1.4.

11.2. -Remove the lock up (66) in order to remove the earring / brush assembly

11.3. - Replace earring/ brush and reassemble as initially placed

12. -STAMP BURNISHER V.P.(68)

12.1: - Follow steps indicated on point 1.2, 1.3, 1.4 and 11.2

12.2. -Remove the earring gasket damaged and stick on the new one .

12.3. – Reassemble as initially placed.

WHEN ORDERING, DO NOT FORGET TO SPECIFY:

- ✓ **PART NUMBER**
- ✓ **DESCRIPTION**
- ✓ **MODEL NUMBER**

NOTE: Drawing numbers are for identification purposes only.

III. - TROUBLE SHOOTING CHART

1. MOTOR DOES NOT START

POSSIBLE CAUSE	SOLUTION
NOT PLUGGED IN PROPERLY	CHECK CONNECTION
LINE CORD DAMAGED	REPLACE
MICRO SWITCH DAMAGED	REPLACE MICRO SWITCH
CIRCUIT BREAKER OFF	RESET BREAKER
CAPACITOR DAMAGED	REPLACE CAPACITOR
MOTOR LINE CORD DAMAGED	REPLACE MOTOR LINE CORD
MOTOR ASSEMBLY DAMAGED	REPLACE MOTOR ASSEMBLY
PISTON AND SPRING DAMAGED	REPLACE

2.-MOTOR WORKS BADLY

POSSIBLE CAUSE	SOLUTION
LOW VOLTAGE	CHECK VOLTAGE (LINE)
CAPACITOR DAMAGED	REPLACE CAPACITOR
IMPROPER MOTOR CONNECTIONS	CHECK CONNECTION

3. - MOTOR STARTS, DOES NOT RUN DRIVER

POSSIBLE CAUSE	SOLUTION
BELT DAMAGED	REPLACE BELT
MOTOR PULLEY DAMAGED	REPLACE MOTOR PULLEY
PULLEY AXLE DAMAGED	REPLACE PULLEY AXLE

4.- MOTOR NOISY

POSSIBLE CAUSE	SOLUTION
BEARING DAMAGED	REPLACE BEARING

5. - THE DUSH CONTROL SYSTEM DOES NOT WORK

POSSIBLE CAUSE	SOLUTION
CONICAL SPRING DAMAGED	REPLACE CONICAL SPRING
BRISTLE BRUSH DAMAGED	REPLACE BRUSH EARRING
FILTER BAG DAMAGED OR SATURATED POWDER	CLEAN BAG FILTER OR REPLACE

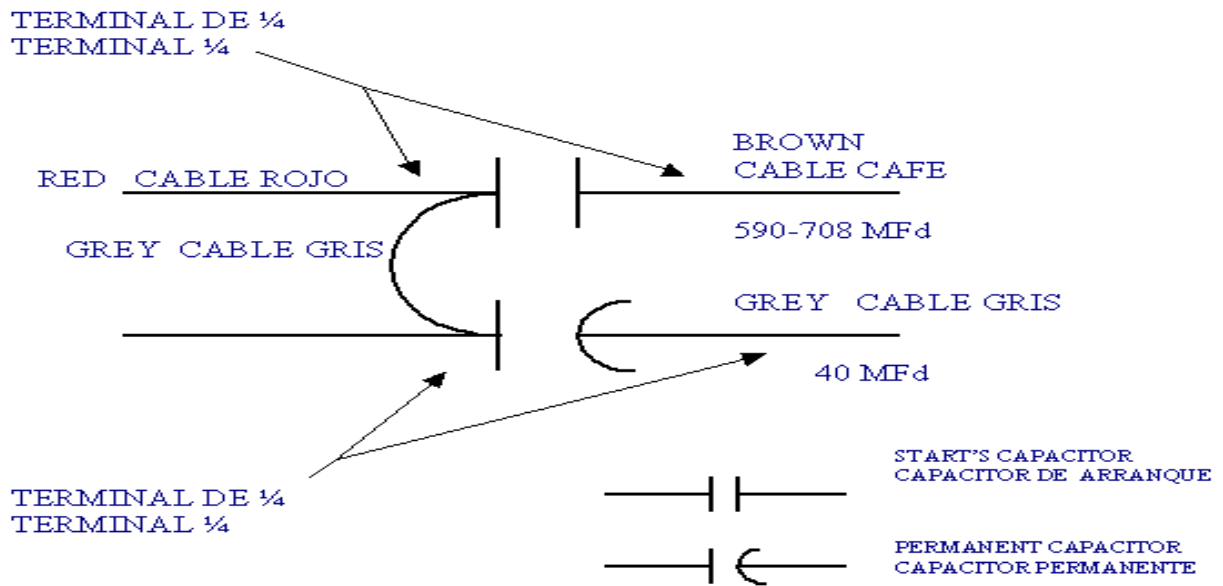
IV. ELECTRICAL RATING /

120 V ~

60 Hz

15 A

V.-WIRING DIAGRAM



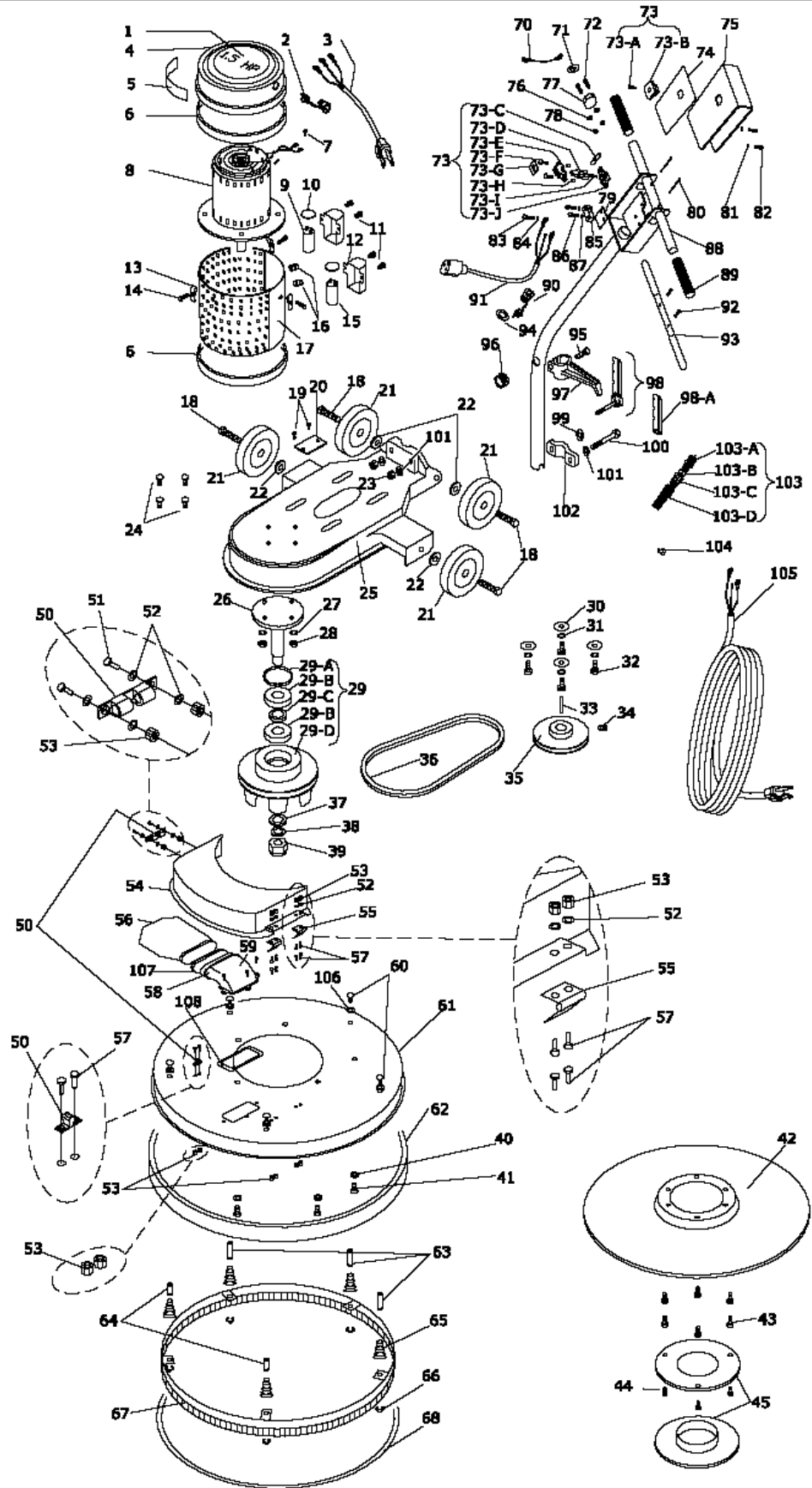
VI. -PARTS LIST

ITEM	PART No.	DESCRIPTION	QTY
1	17-3036-5	Motor Cover Label	1
2	12-0414-8	Grommet Heyco 0.062	1
3	28-0671-9	Motor Cable / Contact Assembly	1
4	05-3765-4	Motor Cover	1
5	17-3025-8	Koblenz Label	1
6	12-0692-9	Motor Cover	2
7	01-1683-0	Screw 8-32 x 1/4	1
8	00-1736-8	Induction Motor	1
9	15-0675-7	Capacitor 40 MFD	1
10	08-0979-8	Insulator Capacitor	2
11	01-1093-2	Screw 8x3/8	4
12	05-3567-4	Cover Capacitor	2
13	02-0071-7	Speed Nut	3
14	01-0068-5	Screw No 8 x 3/8 "	3
15	15-0013-1	Capacitor 590-708 mfd	1
16	12-0024-5	Grommet	2
17	23-0615-7	Motor Cover Assembly	1
18	01-1704-4	Screw Hex 1/2-13x21/2	4
19	03-0119-2	U rivet	2
20	17-3550-5	"Precaution " Plate	1
21	45-0396-7	Wheel Assembly	4
22	04-0074-7	Flat Washer 1/2	4
23	02-0134-3	Nylon Nut 3/8-16	2
24	01-1745-7	Step Screw 5/16-18 x 1	4
25	06-0799-4	Chassis	1
26	06-0757-2	Pulley Axle	1
27	04-0144-8	Split Lock 5/16 "	4
28	02-0011-3	Hex Nut 5-16-18	4
29	46-3614-8	Disc Pulley Assembly	1
29-A	04-0521-7	Locking Pin	1
29-B	26-0187-0	Bearing 6204	2
29-C	04-0522-5	Spacer	1
29-D	06-0758-0	Disc Pulley	1
30	04-0366-7	Washer 3/8	4
31	04-0142-2	Split Lock Washer 3/8 "	4
32	01-1774-7	Screw Hex 3/8-16x 1 1/4	4
33	25-0021-3	Locking Pin	1
34	01-1012-2	Allen Screw 3/8-16 x 3/8 "	1
35	06-0869-5	Motor Pulley	1
36	12-0714-1	Belt	1
37	04-0567-0	Flat Washer Pulley Axle	1
38	04-0154-7	Split Lock Washer 5/8 "	1
39	02-0136-8	Nylon Nut 5/8-18	1
40	04-0078-8	Flat Washer 1/4	5
41	01-1775-4	Screw Hex 1/4-20x3/4	5
42	46-2319-5	Flex Base	1
43	01-1077-5	Screw hexagonal 1/4-20x1	6
44	01-0069-3	Screw # 8 x 1/2	3
45	13-1978-9	Pad Holder	1
70	28-0958-0	Switch Assy Wire	1
71	17-3677-6	Label " Reset "	1
72	01-1256--5	Screw 10-24 x 3/4	2

ITEM	PART No.	DESCRIPTION	QTY
73	45-0534-3	Security Assy Spare Part	
73-A	01-0272-3	Screw # 6 x 1/2	1
73-B	13-2209-8	Security Button	1
73-C	13-2205-6	Piston of the Insurance	1
73-D	13-2206-4	Sucure	1
73-E	13-2208-0	Cover Box	1
73-F	01-1732-5	Screw # 8-32 x 1/2 "	2
73-G	37-0225-5	Dust Cover	1
73-H	05-3536-9	Tubular Spacer	2
73-I	24-0292-3	Spring	1
73-J	13-2207-2	Box Guides of the Insurance	1
74	17-3783-2	Switch Box Label Burnisher	1
75	05-3975-9	Switch Box Cover Black	1
76	04-0271-9	Star Washer No 10	2
77	38-0338-4	Thermal Protector 20 A	1
78	02-0015-4	Hexagonal Nut 10-24	2
79	08-1857-5	Insulator Switch	1
80	03-0593-8	Screw	2
81	04-0276-8	Star Washer No 8	2
82	01-1984-2	Screw # 8-32 x 1 "	2
83	01-0852-2	Hex Screw 6-32 x 3/8 "	1
84	04-0493-9	Star Washer No 8	1
85	11-0096-5	Micro Switch	1
86	01-0851-4	Hex Screw 6-32 x 1"	2
87	04-0275-0	Star Washer No 6	2
88	23-0657-9	Handle Assy for Switch	1
89	12-0830-5	Handle Tube Upper	2
90	12-0414-8	Grommet Heyco 0.062	1
91	28-0955-6	Motor Cable / Contact Assembly	1
92	24-0292-3	Spring	2
93	05-3979-1	Starting Lever	1
94	04-0036-6	Washer	1
95	01-1724-2	Allen Screw 5/16-24 x 3/4	1
96	12-0115-1	Grommet of Rubber	1
97	06-0486-8	Cord Hook	1
98	46-2422-7	Assembly lever tube fixed	1
98-A	12-0617-6	Encasement lever	1
99	05-3582-3	Washer	1
100	01-1705-1	Screw Hex 3/8-16x2 1/2	1
101	04-0073-9	Flat Washer 3/8"	3
102	06-0790-3	Brace tube	1
103	45-0456-9	Cord Strain Relief	1
104	10-0140-3	Connector of pressure 2 x 14	1
105	28-1078-6	Line Cord Assembly	1
103-A	25-1185-5	Coupling	1
103-B	25-1186-3	Strain Relieve Barrel	1
103-C	25-1187-1	Nut Union Relay	1
103-D	24-0286-5	Spring Strain Relieve Spring	1

Assembly control dust 46 - 3572 - 8			
ITEM	PART No	DESCRIPTION	QTY
50	45-0768-7	Quick connector	1
51	01-1374-6	Screw 6-32x3/8	2
52	04-0493-9	Washer Star int.	8
53	02-0126-9	Nut elastic	12
54	13-3694-0	Cover	1
55	45-0760-4	Hinge	2
56	45-0767-9	KIT Bag Filter (3 PZ)	1
56-A	45-0761-2	Filter Bag (single)	2
57	01-2157-4	Screw Flat-Head 6-32x3/8	10
58	13-3695-7	Coupler Bag of Powder	1
59	01-1483-5	Class Head Hex 6x3/8	3
60	01-0862-1	Screw Stove 10-24 x 1/2"	5
61	23-0669-4	Plate Assembly	1
62	12-0810-7	Molding Dish C. D.	1
63	25-1452-01-7	Bolt Guide long. 1	3
64	25-1452-9	Bolt Guide long. 13/16	2
65	24-0345-9	Conical Spring	5
66	04-0469-9	lock up	5
67	46-3574-4	Earring Brush Assembly	1
68	12-1065-01-5	Stamp burnisher v. p.	1
106	04-0141-4	Split Lock Washer 3/16	5
107	24-0233-7	Paper Bag Spring	1
108	12-0819-8	Gasket	1

VII.- ASSEMBLY





FACTORY AUTHORIZED SERVICE

Thorne Electric Company
610 Lanark Suite 205
San Antonio TX ,78218
Tel (210) 590-1226
Fax (210) 590-1258
01-800-548-5741

FACTORY

Koblenz Eléctrica, S. A. de C. V.
Av. Ciencia No 28 Cuautitlán Izcalli
Edo. de México ,C.P. 54730
Tel : 01-55-5864-0300
Web site : <http://www.koblenz-electric.com>

KOBLENZ ELECTRICA S.A. DE C.V.
E-mail: servicio@koblenz-electric.com

LP-BUR-200909