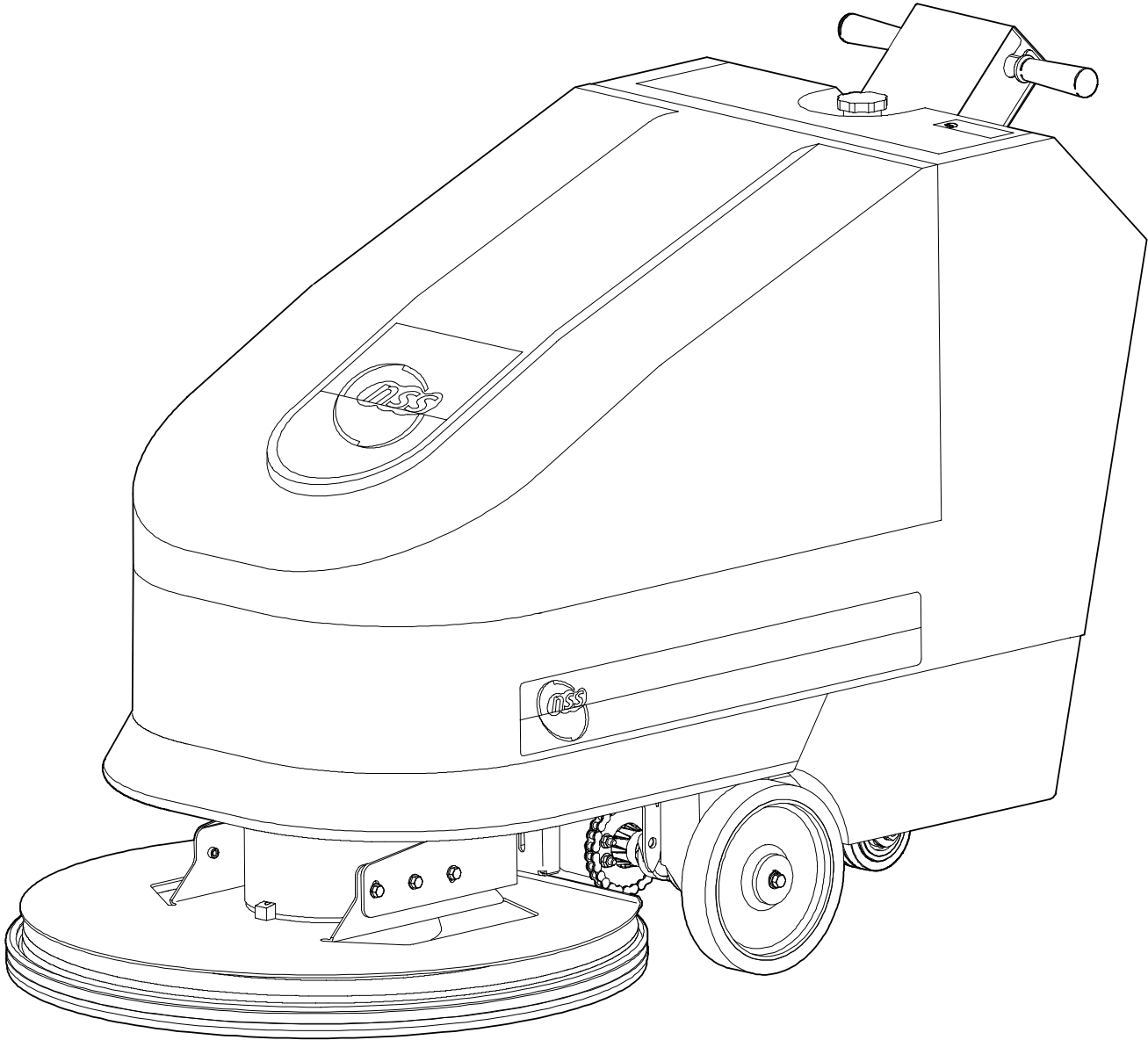


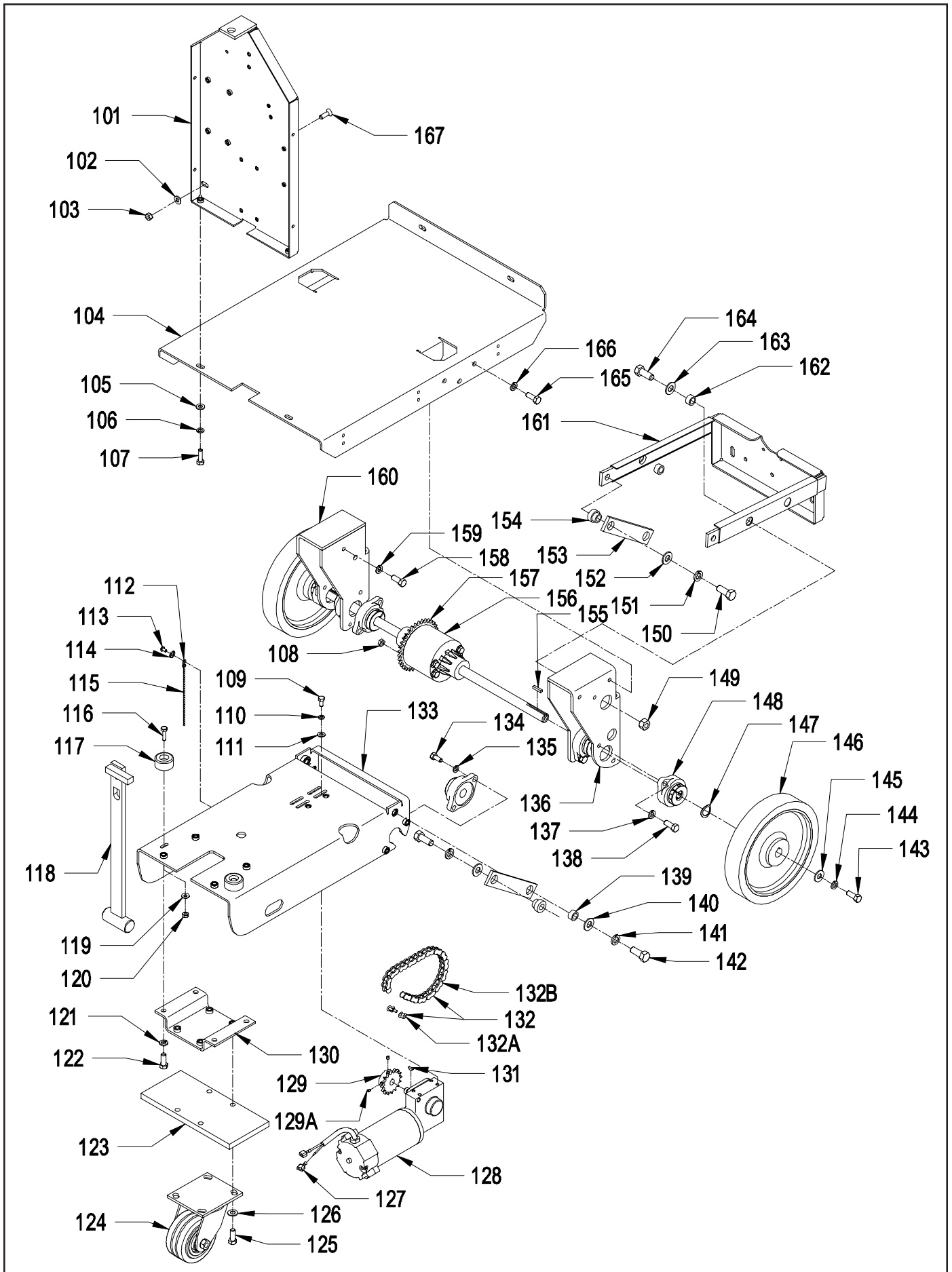
PARTS LIST
CHARGER 2716 DB PLUS



BASE

<u>ITEM</u>	<u>PART NO.</u>	<u>DESCRIPTION</u>	<u>QTY.</u>
101	6495511	CONTROL FRAME WELDMENT	1
102	9121390	11/32 I.D. X 11/16 O.D. X .051/.080 THICK SAE FLAT WASHER (5/16)	2
103	9121450	5/16-18 HEX NUT WITH NY-LOK INSERT	2
104	6495361	BASE PLATE	1
105	9121390	11/32 I.D. X 11/16 O.D. X .051/.080 THICK SAE FLAT WASHER (5/16)	2
106	9121520	5/16 SPLIT LOCK WASHER	2
107	9121640	5/16-18 X 3/4 HEX BOLT	2
108	9121450	5/16-18 HEX NUT WITH NY-LOK INSERT	4
109	9121210	1/4-20 X 5/8 HEX BOLT	4
110	9120880	1/4 SPLIT LOCK WASHER	4
111	9120930	9/32 I.D. X 5/8 O.D. X .051/.080 THICK SAE FLAT WASHER (1/4)	4
112	6491871	END COUPLING ROUND BEAD CHAIN	1
113	9120380	10-24 X 3/8 ROUND HEAD PHILLIPS MACHINE SCREW	1
114	9120330	10 EXTERNAL STAR LOCK WASHER	1
115	6491860	ROUND BEAD CHAIN (CUT LENGTH 6")	.5'
116	9121270	1/4-20 X 1 HEX BOLT	2
117	4894461	RUBBER STOP	2
118	6490701	CATCH ASSEMBLY	1
119	9120930	9/32 I.D. X 5/8 O.D. X .051/.080 THICK SAE FLAT WASHER (1/4)	2
120	9120900	1/4-20 HEX NUT WITH NY-LOK INSERT	2
121	9122100	3/8 SPLIT LOCK WASHER	4
122	9122220	3/8-16 X 3/4 HEX BOLT	4
123	6495461	CASTER BLOCK	1
124	6492061	RED 4 INCH CASTER	1
	4490391	CASTER WHEEL WITH BEARING	1
125	9122275	3/8-16 X 1 1/2 HEX BOLT	4
126	9122100	3/8 SPLIT LOCK WASHER	4
127	5490171	FULLY INSULATED MALE TERMINAL 14-16 GAGE	2
128	6495291	DRIVE MOTOR 36 VOLT	1
129	6495531	SPROCKET 40BS12H - INCLUDES:	1
129A	9120637	10-24 X 1/4 SET SCREW - CUP POINT	2
130	6495141	CASTER MOUNT	1
131	9120013	1/8 SQUARE X 1/2 LONG WOODRUFF KEY - STEEL	1
132	6495569	#40 ROLLER CHAIN 33 LINKS + MASTER - INCLUDES:	1
132A	2795211	LINK - MASTER #40 CHAIN	1
132B	6495541	#40 ROLLER CHAIN 33 LINKS NO MASTER	1
133	6495151	FRAME	1
134	9122260	3/8-16 X 1 HEX BOLT	4
135	9122100	3/8 SPLIT LOCK WASHER	4
136	6495371	RIGHT OUTER BEARING / PIVOT MOUNT	1
137	9122100	3/8 SPLIT LOCK WASHER	8
138	9122260	3/8-16 X 1 HEX BOLT	8
139	4492791	BUSHING, PIVOT	2
140	9122450	17/32 I.D. X 1 1/16 O.D. X .074/.121 THICK SAE FLAT WASHER (1/2)	2
141	9122420	1/2 SPLIT LOCK WASHER	2
142	9122540	1/2-13 X 1 1/4 HEX BOLT	2
143	9121640	5/16-18 X 3/4 HEX BOLT	2
144	9121520	5/16 SPLIT LOCK WASHER	2
145	9121985	13/32 I.D. X 1 O.D. X .12 THICK FLAT WASHER (11 GAGE)	2
146	6495391	DRIVE WHEEL 9 X 1 5/8	2
147	9123110	13/16 I.D. X 1 1/8 O.D. X .13 THICK WAVE SPRING WASHER (3/4)	2
148	6495061	PILLOW BLOCK BEARING WITH GRIP-IT BEARING RING	6
149	9122495	1/2-13 HEX NUT WITH NY-LOK INSERT - THIN	2
150	9122540	1/2-13 X 1 1/4 HEX BOLT	2
151	9122420	1/2 SPLIT LOCK WASHER	2
152	9122450	17/32 I.D. X 1 1/16 O.D. X .074/.121 THICK SAE FLAT WASHER (1/2)	2
153	6490691	LIFT ARM	2
154	4495141	LIFT ARM SPACER	2
155	9120825	3/16 SQUARE X 7/8 LONG KEY - STEEL	2
156	6495111	DIFFERENTIAL - LONG	1
157	6495521	SPROCKET 40A26	1
158	9122220	3/8-16 X 3/4 HEX BOLT	2
159	9122100	3/8 SPLIT LOCK WASHER	2
160	6495381	LEFT OUTER BEARING / PIVOT MOUNT	1
161	6495501	PIVOT WELDMENT	1
162	4492791	BUSHING, PIVOT	2
163	9122450	17/32 I.D. X 1 1/16 O.D. X .074/.121 THICK SAE FLAT WASHER (1/2)	2
164	9122540	1/2-13 X 1 1/4 HEX BOLT	2
165	9122220	3/8-16 X 3/4 HEX BOLT	6
166	9122100	3/8 SPLIT LOCK WASHER	6
167	9121470	5/16-18 X 1 FLAT HEAD PHILLIPS MACHINE SCREW	4

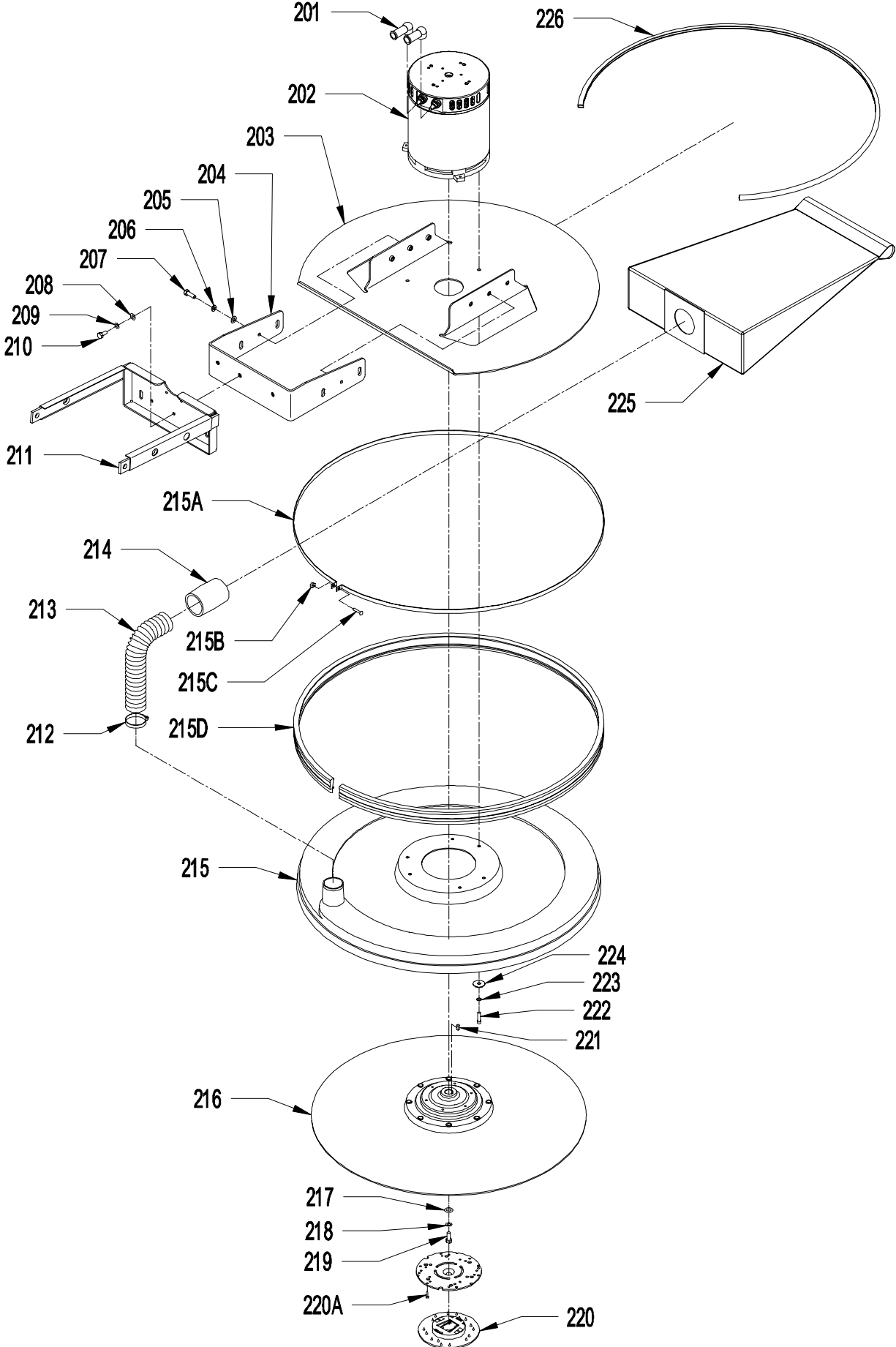
BASE



SHIELD AND PAD DRIVER

<u>ITEM</u>	<u>PART NO.</u>	<u>DESCRIPTION</u>	<u>QTY.</u>
201	6492051	STUD TERMINAL BOOT - RUBBER	2
202	6495641	MOTOR 36 VOLT - 1500 RPM, 3 HP	1
203	6495093	STEEL SKIRT / MOTOR MOUNT	1
204	6495351	SKIRT MOUNT FORK	1
205	9121390	11/32 I.D. X 11/16 O.D. X .051/.080 THICK SAE FLAT WASHER (5/16)	6
206	9121520	5/16 SPLIT LOCK WASHER	6
207	9121640	5/16-18 X 3/4 HEX BOLT	6
208	9121390	11/32 I.D. X 11/16 O.D. X .051/.080 THICK SAE FLAT WASHER (5/16)	3
209	9121520	5/16 SPLIT LOCK WASHER	3
210	9121640	5/16-18 X 3/4 HEX BOLT	3
211	6495501	PIVOT WELDMENT	1
212	4495441	HOSE CLAMP, 1 9/16" TO 2 1/2" DIAMETER	1
213	3392561	VAC EXHAUST HOSE	1
214	4495531	END CUFF - 2"	1
215	6495459	CW-FLEXIWALL SHIELD ASSEMBLY - INCLUDES:	1
215A	6490732	BUMPER STRAP	1
215B	9120350	10-24 HEX NUT WITH NY-LOK INSERT	1
215C	9120450	10-24 X 1 ROUND HEAD PHILLIPS MACHINE SCREW	1
215D	6490191	BUMPER / BRUSH	1
216	6492558	DRIVER, PAD - 27" ASSEMBLED & BALANCED	1
217	9121985	13/32 I.D. X 1 O.D. X .12 THICK FLAT WASHER (11 GAGE)	1
218	9121520	5/16 SPLIT LOCK WASHER	1
219	9121490	5/16-24 X 7/8 HEX BOLT	1
220	5990731	SPRING CLIP PAD HOLDER SET - INCLUDES:	1
220A	9120810	10 X 1/2 PAN HEAD PHILLIPS SHEET METAL SCREW	3
221	9120815	3/16 SQUARE X 1/2 LONG KEY - STEEL	1
222	9120980	1/4-20 X 1 SOCKET HEAD CAP SCREW	3
223	9120880	1/4 SPLIT LOCK WASHER	3
224	9120950	1/4 X 1 1/4 FENDER WASHER	3
225	6592801	VAC TRAC COLLECTION BAG	1
	5796101	PAPER BAG - 5 PACK (OPTIONAL)	1
226	9997600	EDGE TRIM (CUT TO 66")	5.5'

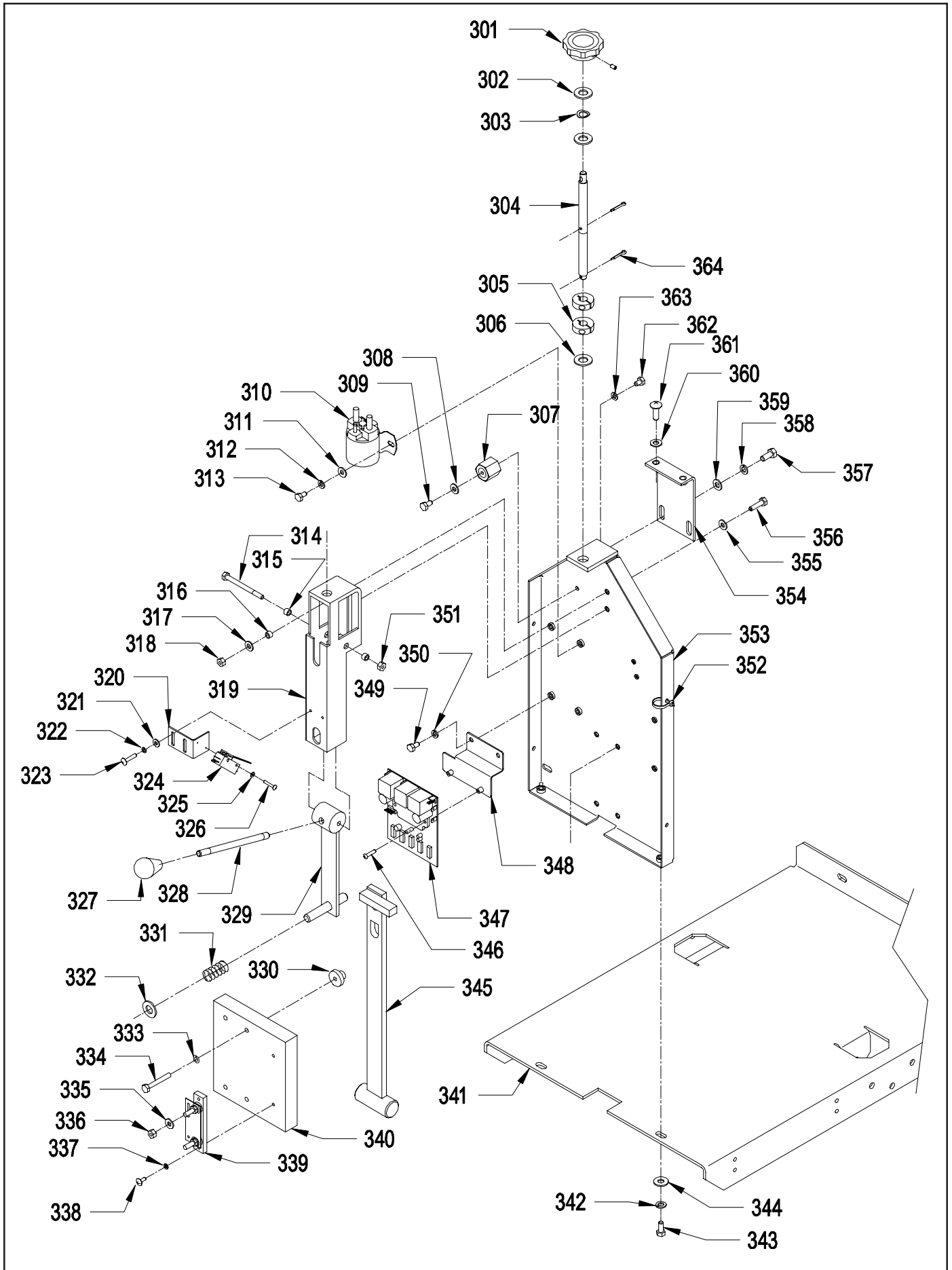
SHIELD AND PAD DRIVER



CONTROL FRAME

<u>ITEM</u>	<u>PART NO.</u>	<u>DESCRIPTION</u>	<u>QTY.</u>
301	4490521	LOAD ADJUST KNOB (INCLUDES SET SCREW)	1
302	9122450	17/32 I.D. X 1 1/16 O.D. X .074/.121 THICK SAE FLAT WASHER (1/2)	2
303	9122705	1/2 I.D. X 3/4 O.D. X .01 THICK 1 WAVE SPRING WASHER (1/2)	1
304	6490611	ADJUSTMENT ROD	1
305	6490621	ADJUSTMENT ROD COLLAR	2
306	9122180	13/32 I.D. X 13/16 O.D. X .051/.080 THICK WROUGHT WASHER (3/8)	1
307	4490561	INSULATED STANDOFF	1
308	9120970	1/4 EXTERNAL STAR LOCK WASHER	1
309	9121250	1/4-20 X 3/4 HEX BOLT	1
310	4491011	SOLENOID, 36 VOLT	1
311	9120930	9/32 I.D. X 5/8 O.D. X .051/.080 THICK SAE FLAT WASHER (1/4)	2
312	9120880	1/4 SPLIT LOCK WASHER	2
313	9121170	1/4-20 X 1/2 HEX BOLT	2
314	9121287	1/4-20 X 2 1/2 HEX HEAD BOLT - STEEL	1
315	2791281	BUSHING SPACER	2
316	2791281	BUSHING SPACER	2
317	9120930	9/32 I.D. X 5/8 O.D. X .051/.080 THICK SAE FLAT WASHER (1/4)	2
318	9120900	1/4-20 HEX NUT WITH NY-LOK INSERT	2
319	6490601	ADJUSTMENT BRACKET WELDMENT	1
320	4495326	SWITCH BRACKET	1
321	9120370	7/32 I.D. X 1/2 O.D. X .032/.065 THICK SAE FLAT WASHER (#10)	2
322	9120320	10 SPLIT LOCK WASHER	2
323	9120460	10-24 X 1 1/4 ROUND HEAD PHILLIPS MACHINE SCREW	2
324	4491071	SNAP SWITCH	1
325	9120130	6 EXTERNAL STAR LOCK WASHER	2
326	9120090	6-32 X 7/8 PAN HEAD PHILLIPS MACHINE SCREW	2
327	4490601	KNOB, RAISE / LOWER ROD	1
328	6490101	LATCH HANDLE	1
329	6490093	LATCH ASSEMBLY	1
330	4495351	SPACER GUIDE	4
331	4490631	COMPRESSION SPRING	1
332	9122450	17/32 I.D. X 1 1/16 O.D. X .074/.121 THICK SAE FLAT WASHER (1/2)	1
333	9120880	1/4 SPLIT LOCK WASHER	4
334	9121145	1/4-20 X 2 HEX BOLT	4
335	9120971	1/4 EXTERNAL STAR LOCK WASHER	2
336	9120920	1/4-20 HEX NUT	2
337	9120320	10 SPLIT LOCK WASHER	2
338	9120410	10-24 X 1/2 ROUND HEAD PHILLIPS MACHINE SCREW	2
339	4491031	SHUNT	1
340	6492271	COUNTERPOISE	1
341	6495361	BASE PLATE	1
342	9121520	5/16 SPLIT LOCK WASHER	2
343	9121640	5/16-18 X 3/4 HEX BOLT	2
344	9121390	11/32 I.D. X 11/16 O.D. X .051/.080 THICK SAE FLAT WASHER (5/16)	2
345	6490701	CATCH ASSEMBLY	1
346	9120260	8-32 X 3/4 ROUND HEAD PHILLIPS MACHINE SCREW	2
347	2690021	SPEED CONTROL, CURTIS	1
348	6492473	SPEED CONTROL MOUNTING BRACKET	1
349	9121170	1/4-20 X 1/2 HEX BOLT	2
350	9120880	1/4 SPLIT LOCK WASHER	2
351	9120900	1/4-20 HEX NUT WITH NY-LOK INSERT	1
352	9123005	1/8 X 5 1/2 WIRE TIE	4
353	6495511	CONTROL FRAME WELDMENT	1
354	4492803	TOP SUPPORT BRACKET	1
355	9120970	1/4 EXTERNAL STAR LOCK WASHER	2
356	9121270	1/4-20 X 1 HEX BOLT	2
357	9121640	5/16-18 X 3/4 HEX BOLT	2
358	9121520	5/16 SPLIT LOCK WASHER	2
359	9121390	11/32 I.D. X 11/16 O.D. X .051/.080 THICK SAE FLAT WASHER (5/16)	2
360	9121400	3/8 I.D. X 7/8 O.D. X .064/.104 THICK WROUGHT WASHER (5/16)	2
361	9121480	5/16-18 X 1 ROUND HEAD PHILLIPS MACHINE SCREW	2
362	9121170	1/4-20 X 1/2 HEX BOLT	1
363	9120880	1/4 SPLIT LOCK WASHER	1
364	9120310	1/8 X 3/4 COTTER PIN	2

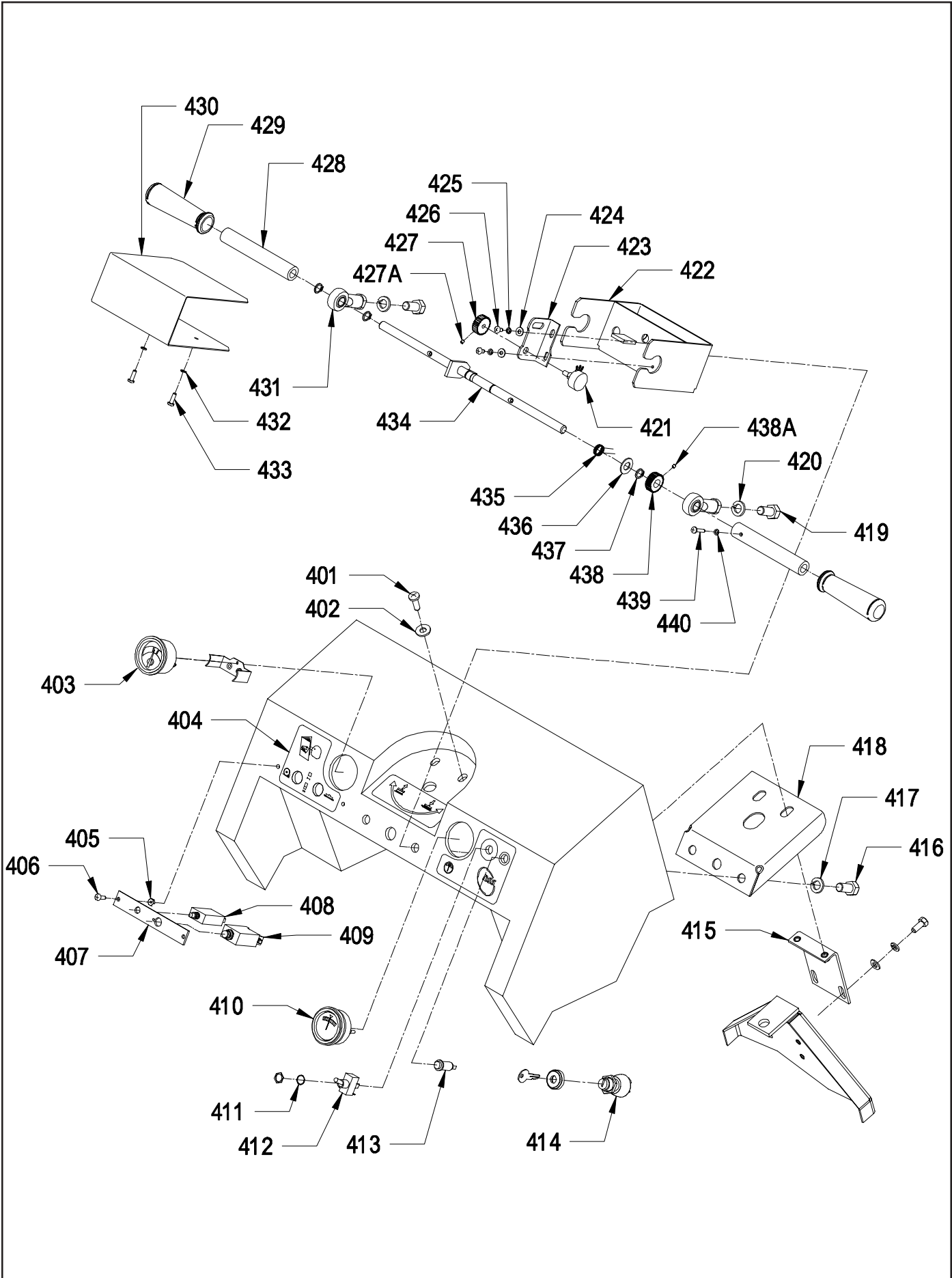
CONTROL FRAME



TWISTED GRIP CONTROL

<u>ITEM</u>	<u>PART NO.</u>	<u>DESCRIPTION</u>	<u>QTY.</u>
401	9121480	5/16-18 X 1 ROUND HEAD PHILLIPS MACHINE SCREW	2
402	9121400	3/8 I.D. X 7/8 O.D. X .064/.104 THICK WROUGHT WASHER (5/16)	2
403	4491051	BATTERY METER WITH HARDWARE	1
404	6495191	CONTROL PANEL DECAL KIT	1
405	9120350	10-24 HEX NUT WITH NY-LOK INSERT	2
406	9120530	10-24 X 7/8 TRUSS HEAD PHILLIPS MACHINE SCREW	2
407	6495411	BREAKER PLATE	1
408	2392201	CIRCUIT BREAKER, 115 VOLT 10 AMP	1
409	6491261	CIRCUIT BREAKER - 90 AMP/ETA	1
410	4491041	RPM METER WITH HARDWARE	1
411	0691851	1/2 INTERNAL STAR LOCK WASHER	1
412	4491101	TOGGLE SWITCH, MOTOR	1
413	2691981	LIGHT - INDICATOR, GREEN, 36 VOLT, WITH CLIP	1
414	6495499	KEY SWITCH KIT (OPTIONAL)	1
	2795711	KEY SWITCH & KEY	1
	2796131	REPLACEMENT KEY	1
415	4492803	TOP SUPPORT BRACKET	1
416	9122530	1/2-13 X 1 HEX BOLT	2
417	9122420	1/2 SPLIT LOCK WASHER	2
418	6495041	HANDLE BOX MOUNTING PLATE	1
419	9122700	1/2-20 X 1 HEX BOLT	2
420	9122420	1/2 SPLIT LOCK WASHER	2
421	2694131	POTENTIOMETER, CURTIS SPEED CONTROL	1
422	6495021	HANDLE BOX - TWISTED GRIP	1
423	6495051	POTENTIOMETER MOUNTING BRACKET	1
424	9120370	7/32 I.D. X 1/2 O.D. X .032/.065 THICK FLAT WASHER (#10)	2
425	9120320	10 SPLIT LOCK WASHER	2
426	9120410	10-24 X 1/2 ROUND HEAD PHILLIPS MACHINE SCREW	2
427	2691941	DRIVEN GEAR, POTENTIOMETER	1
427A	9120170	8-32 X 3/16 SET SCREW - KNURL POINT - STEEL	2
428	2691871	HANDLE GRIP BASE	2
429	3392901	HANDLE GRIP	2
430	6495031	HANDLE BOX COVER	1
431	2391941	BALL JOINT	2
432	9120320	10 SPLIT LOCK WASHER	2
433	9120410	10-24 X 1/2 ROUND HEAD PHILLIPS MACHINE SCREW	2
434	6495011	HANDLE BAR	1
435	3392661	TORSION SPRING	1
436	9122450	17/32 I.D. X 1 1/16 O.D. X .074/.121 THICK FLAT WASHER (1/2)	1
437	5091701	RETAINING RING	3
438	2691931	DRIVE GEAR, HANDLE BAR	1
438A	9120170	8-32 X 3/16 SET SCREW - KNURL POINT - STEEL	2
439	9120270	8-32 X 7/8 ROUND HEAD PHILLIPS MACHINE SCREW	2
440	9120370	7/32 I.D. X 1/2 O.D. X .032/.065 THICK FLAT WASHER (#10)	2

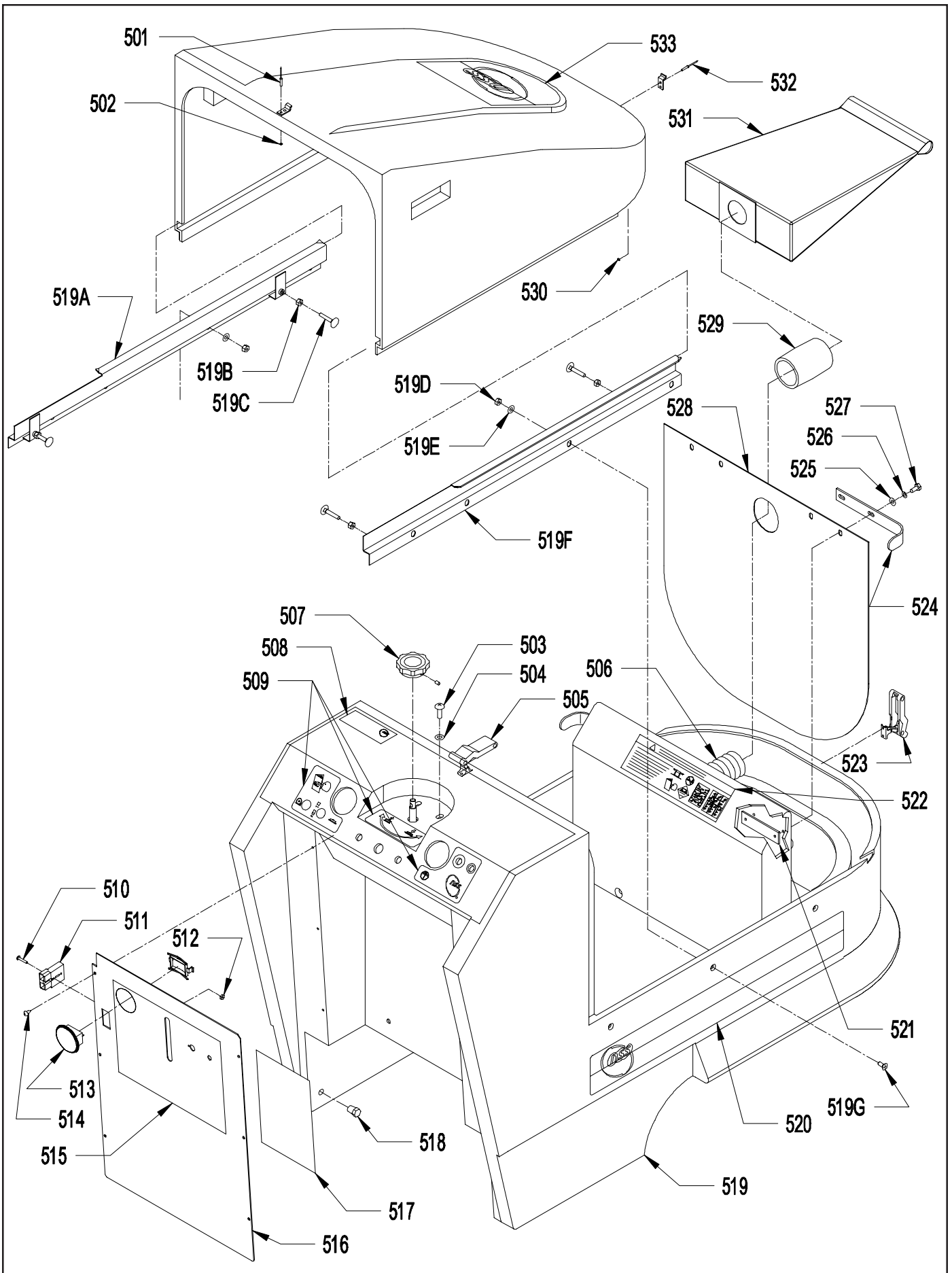
TWISTED GRIP CONTROL



HOUSING

ITEM	PART NO.	DESCRIPTION	QTY.
501	9120317	5/32 X 5/8 DOME HEAD POP RIVET - STEEL	4
502	9120185	5/32 I.D. X 1/2 O.D. WASHER - STEEL - ZINC PLATE	4
503	9121480	5/16-18 X 1 ROUND HEAD PHILLIPS MACHINE SCREW	2
504	9121400	3/8 I.D. X 7/8 O.D. X .064/.104 THICK WROUGHT WASHER (5/16)	2
505	6491171	SOFT DRAW LATCH WITH CONCEALED KEEPER	1
506	3392561	VAC EXHAUST HOSE	1
507	4490521	LOAD ADJUST KNOB (INCLUDES SET SCREW)	1
508	6495311	CHARGER 2716 DB PLUS NAME IDENTIFIER LOGO	1
509	6495191	CONTROL PANEL DECAL KIT	1
510	9120090	6-32 X 7/8 PAN HEAD PHILLIPS MACHINE SCREW	2
511	4491901	CHARGER PLUG ONLY - GRAY 36 VOLT	1
	6490821	WIRE ASSEMBLY - ANDERSON / STANDOFF - NOT SHOWN	1
512	9120020	6-32 HEX NUT WITH STAR LOCK WASHER	2
513	2397361	HOUR METER	1
514	9120790	10 X 5/8 PAN HEAD PHILLIPS SHEET METAL SCREW	6
515	6495201	REAR PANEL DECAL	1
516	6495491	REAR COVER PANEL	1
517	6495211	WIRING DIAGRAM DECAL	1
518	6490951	1/4 MPT PLUG	2
519	6495401	HOUSING WITH SLIDE RAILS - INCLUDES:	1
519A	6495441	SLIDE RAIL, LEFT	1
519B	9120920	1/4-20 HEX NUT	4
519C	9121039	1/4-20 X 1 1/2 ELEVATOR BOLT - ZINC PLATED	4
519D	9120900	1/4-20 HEX NUT WITH NY-LOK INSERT	6
519E	9120930	9/32 I.D. X 5/8 O.D. X .051/.080 THICK (1/4) SAE FLAT WASHER	6
519F	6495431	SLIDE RAIL, RIGHT	1
519G	9121037	1/4-20 X 5/8 FLAT HEAD PHILLIPS MACHINE SCREW	6
520	6493061	SIDE DECAL 3.5 X 26	2
521	6491211	TAPPING PLATE	2
522	6495301	BATTERY WARNING LABEL	1
523	6491171	SOFT DRAW LATCH WITH CONCEALED KEEPER	1
524	6491193	HOOD STOP / SUPPORT BRACKET	2
525	9120930	9/32 I.D. X 5/8 O.D. X .051/.080 THICK (1/4) SAE FLAT WASHER	4
526	9120880	1/4 SPLIT LOCK WASHER	4
527	9121270	1/4-20 X 1 HEX BOLT	4
528	6495421	RUBBER MOTOR COVER	1
529	4495531	END CUFF - 2"	1
530	9120185	5/32 I.D. X 1/2 O.D. WASHER - STEEL - ZINC PLATE	4
531	6492801	CLOTH FILTER BAG	1
	5796101	PAPER BAG - 5 PACK (OPTIONAL)	1
532	9120317	5/32 X 5/8 DOME HEAD POP RIVET - STEEL	4
533	6492871	HOOD DECAL	1

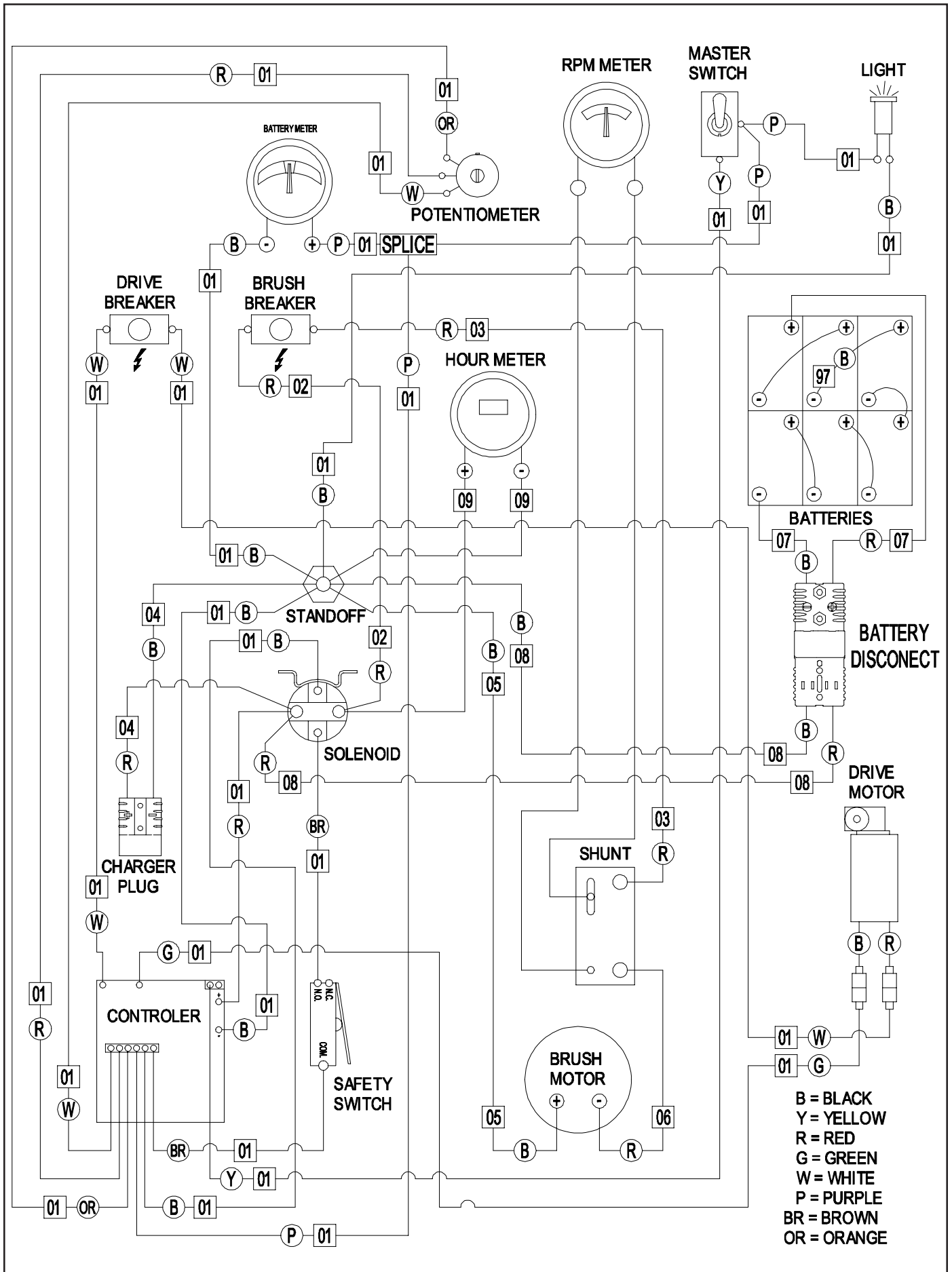
HOUSING



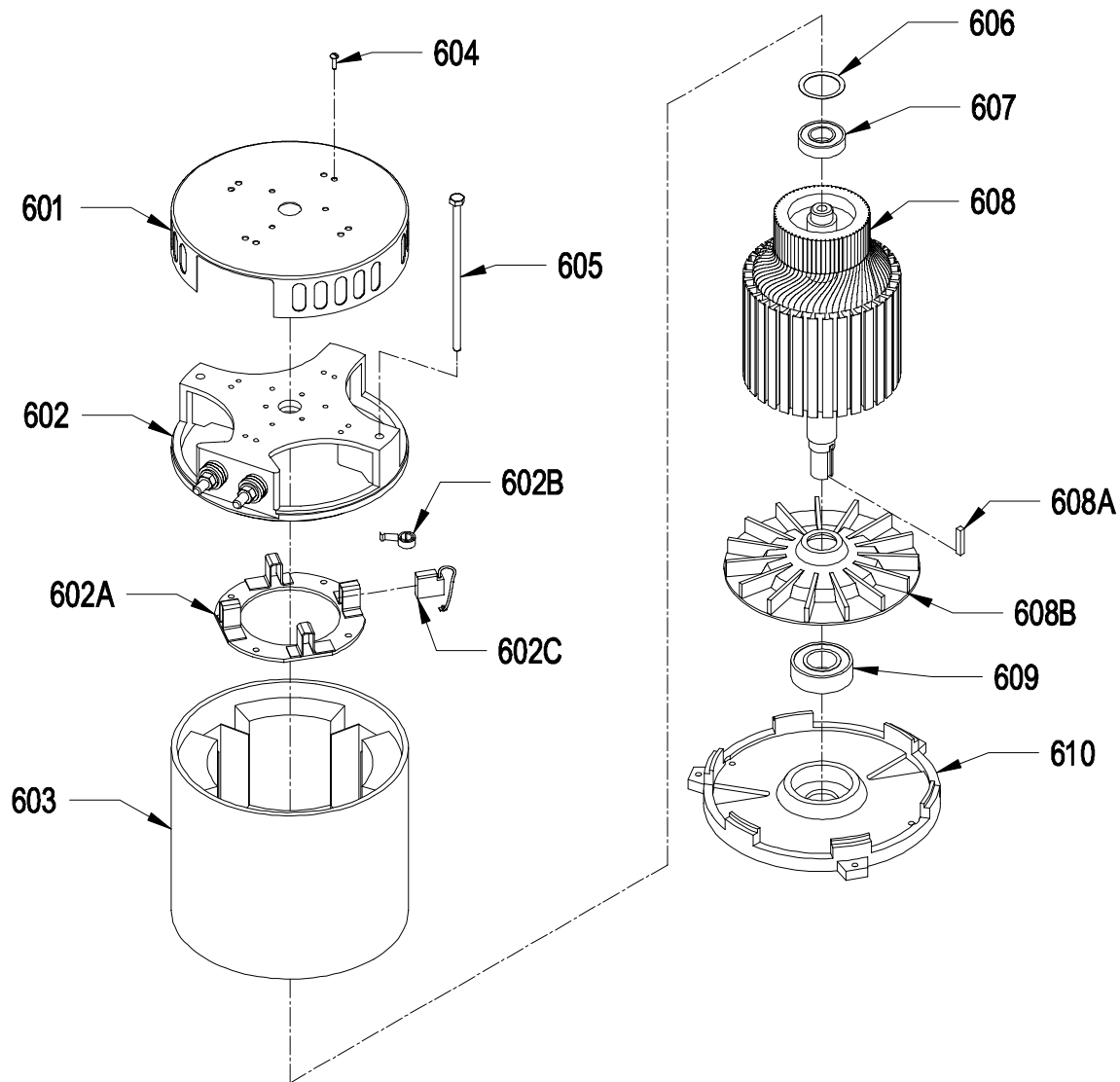
WIRING DIAGRAM

<u>ITEM</u>	<u>PART NO.</u>	<u>DESCRIPTION</u>	<u>QTY.</u>
01	6495321	WIRE HARNESS	1
02	6495331	WIRE ASSEMBLY, SOLENOID TO BRUSH BREAKER	1
03	6495341	WIRE ASSEMBLY, BRUSH BREAKER TO SHUNT	1
04	6490821	WIRE ASSEMBLY, ANDERSON TO SOLENOID / STANDOFF	1
05	6495131	WIRE ASSEMBLY, MOTOR TO STANDOFF	1
06	6495121	WIRE ASSEMBLY, SHUNT TO MOTOR	1
07	7691661	WIRE ASSEMBLY, ANDERSON - POS./NEG. BATTERY 36 VOLT	1
08	6491831	WIRE ASSEMBLY, ANDERSON - SOLENOID / STANDOFF 36 VOLT	1
09	6495621	HOUR METER LEADS	1
97	2391981	BATTERY JUMPER 3/8" RING #97	5
—	2392201	CIRCUIT BREAKER, 115 VOLT 10 AMP (DRIVE)	1
—	2397361	HOUR METER	1
—	2690021	SPEED CONTROL, CURTIS	1
—	2691501	BATTERY, WET, 6 VOLT, 325 AMP/HR	6
—	2691981	INDICATOR LIGHT - GREEN LENS, 36 VOLT WITH CLIP	1
—	2694131	POTENTIOMETER, CURTIS CONTROL	1
—	2698041	BATTERY CHARGER 120 VOLT AC 36 VOLT DC 25 AMP	1
—	2795711	KEY SWITCH & KEY - OPTIONAL	1
—	4490561	INSULATED STANDOFF	1
—	4491011	SOLENOID, 36 VOLT	1
—	4491031	SHUNT	1
—	4491041	RPM METER WITH HARDWARE	1
—	4491051	BATTERY METER WITH HARDWARE	1
—	4491071	SNAP SWITCH (SAFETY)	1
—	4491101	TOGGLE SWITCH, MOTOR	1
—	4491901	CHARGER PLUG ONLY - GRAY 36 VOLT	1
—	6491261	CIRCUIT BREAKER - 90 AMP/ETA (BRUSH)	1
—	6491841	175 AMP ANDERSON WITH CONTACTS GRAY 36 VOLT	2
—	6495291	DRIVE MOTOR 36 VOLT	1
—	6495571	WIRE ASSEMBLY - KEY SWITCH ADAPTOR	1
—	6495641	MOTOR 36 VOLT - 1500 RPM, 3 HP	1
—	9123005	1/8 X 5 1/2 WIRE TIE	5

WIRING DIAGRAM



MOTOR



<u>ITEM</u>	<u>PART NO.</u>	<u>DESCRIPTION</u>	<u>QTY.</u>
	6495641	MOTOR 36 VOLT, 1500 RPM, 3 HP - INCLUDES:	1
601	5991731	COMMUTATOR BRACKET COVER	1
	6493531	COMMUTATOR BRACKET ASSEMBLY - INCLUDES:	1
602	6493541	COMMUTATOR BRACKET	1
602A	6493601	BRUSH BOARD ASSEMBLY - INCLUDES:	1
602B	6493591	SPRING	2
602C	7692041	CARBON BRUSH	2
603	6493631	STATOR FRAME ASSEMBLY - WITH CLIPS AND MAGNETS - 3 HP	1
604	9120600	10-24 X 1/2 PAN HEAD PHILLIPS THREAD CUTTING SCREW	4
605	6493621	1/4-20 X 9 HEX HEAD THRU BOLT - 3 HP	2
606	5991741	HELICAL WASHER - LARGE	1
607	5991551	BEARING - TOP END	1
608	6493641	ARMATURE - 1500 RPM - 3 HP - INCLUDES:	1
608A	9120827	3/16 SQUARE X 1 LONG KEY - STEEL	1
608B	6493571	ALUMINUM FAN	1
609	5991541	BEARING - BOTTOM END	1
610	6493551	BEARING END BRACKET	1

TROUBLE SHOOTING

PROBLEM	CAUSE	SOLUTION
Pad does not turn,	Low battery charge. Loose battery cable.	Recharge batteries. Tighten & clamp battery cables.
	Circuit breaker has tripped.	Reduce pad pressure/change pad reset breaker.
	Worn motor carbon brushes.	Change carbon brushes.
	Pad load adjustment knob out of adjustment.	Adjust knob until motor will turn on.
	Micro-switch not engaged.	Adjust mounting bracket.
Machine pushes hard,	Worn wheel or caster.	Grease wheels or replace.
Uneven floor buffing,	Worn pad.	Change pad.
	Motor out of alignment.	Call NSS service center for repair.
Machine vibrates,	Pad is torn or not centered.	Center pad. Change pad. Use correct pad. Check pad driver for damager & replace if necessary.
Circuit breaker trips,	Pad pressure too heavy.	Reduce pad pressure. Run machine in green area of AMP meter.
	Spray buffing.	Do not spray buff with Charger 2716DB PLUS.
	Pad rubbing on flexiwall shield.	Realign pad on driver or replace with new pad. Check pad size.
Short running time on battery charge,	Dead cell in battery Excessive pad pressure. Incorrect pad.	Test batteries and replace. Reduce pad pressure. Use NSS pads or recommended equivalent.
Battery charger does not turn on,	Connection not made between battery charger and machine.	Check Anderson connectors for proper contact on both charger and machine.
	Improper charger sequence.	Read instructions on battery charger or in instruction manual.



NSS ® Enterprises, Inc.

3115 Frenchmens Road, Toledo, Ohio 43607

PHONE (419) 531-2121 FAX (419) 531-3761

NSS ® Enterprises, Inc. European Distribution Centre

Unit II, Pinfold Trading Estate * 55 Nottingham Road
STAPLEFORD, NOTTINGHAM NG9 8AD ENGLAND U.K.

PHONE: (44) 0115 939 1568 * FAX: (44) 0115 949 0615