

Predator Automatic Scrubber 28

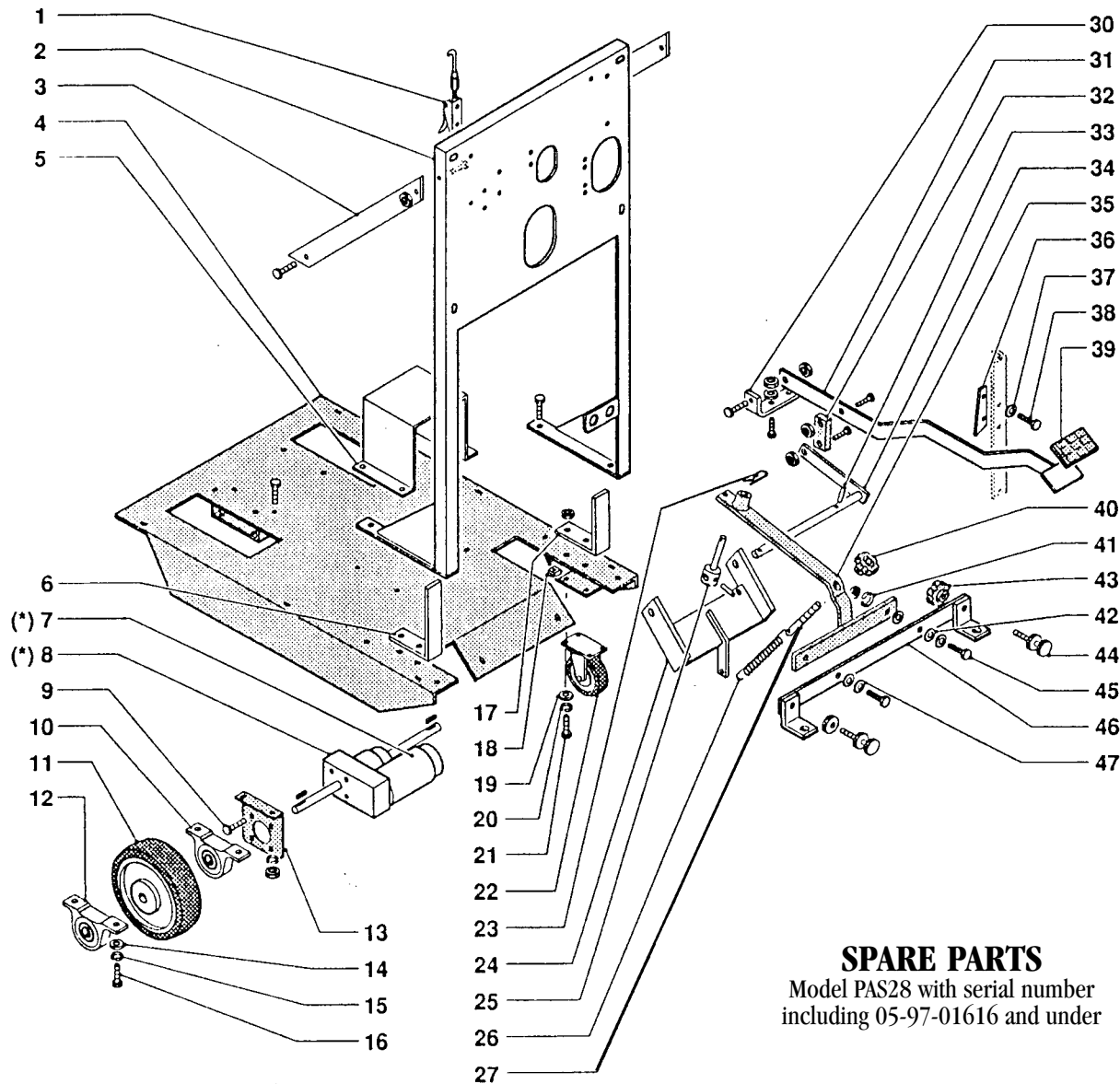
PARTS LIST

Model PAS28



Contains drawings for all PAS28 models to date

WARNING: OPERATOR MUST READ AND UNDERSTAND THIS MANUAL COMPLETELY BEFORE OPERATING THIS EQUIPMENT.



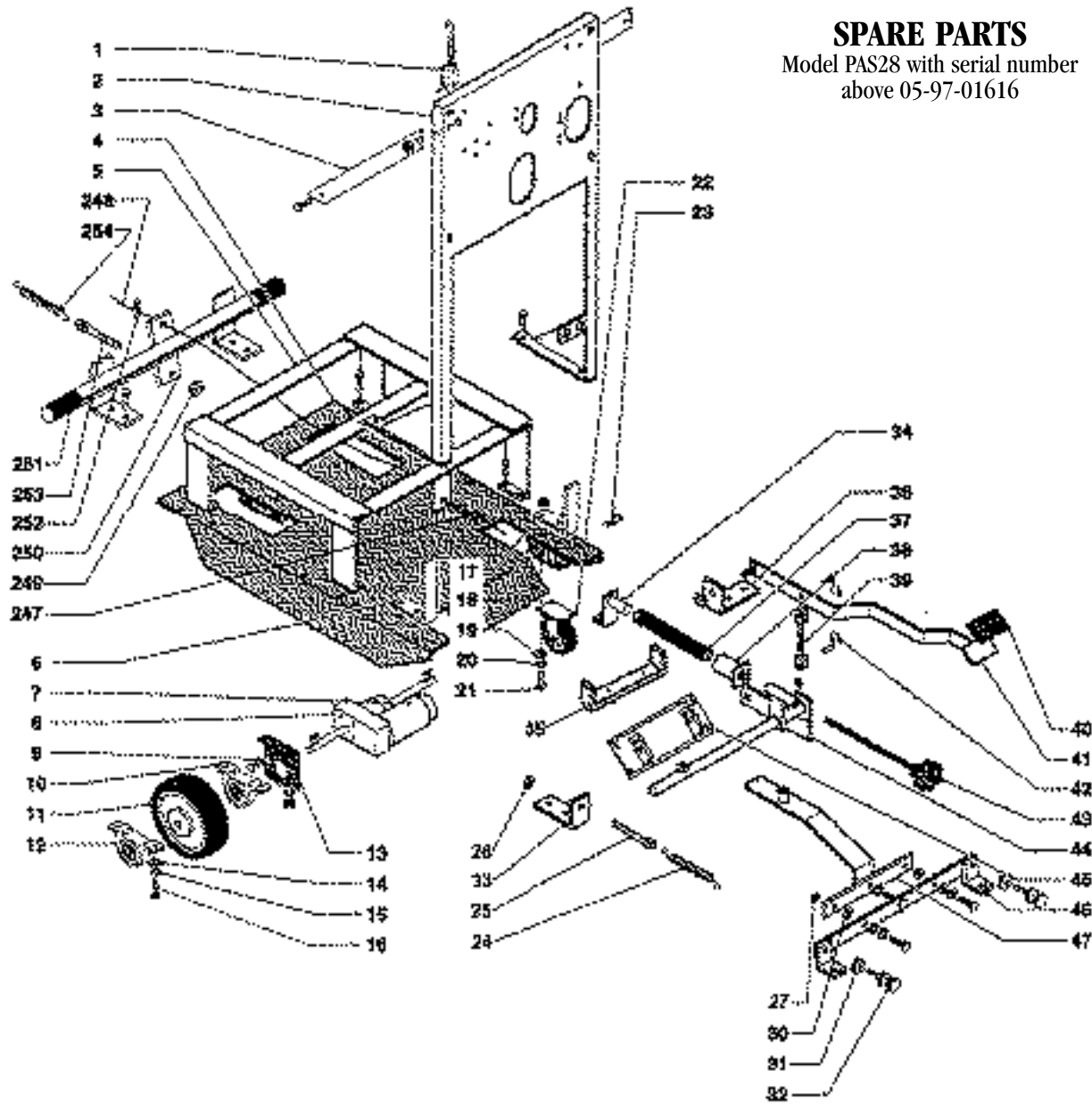
SPARE PARTS
 Model PAS28 with serial number
 including 05-97-01616 and under

Pos	Part No.	Description
1	PAS122	Hook
2	PAS177	Back frame
3	700.003	Yoke
4	700.004	Frame
5	700.005	Support
6	700.006	Left pedal stop
7	PAS221	Drive motor (*)
8	PAS220	Differential gear (*)
(*)	PAS60	Drive motor, differential
9	PAS223	Screw
10	PAS61	Support
11	PAS62	Wheel
12	PAS61	Bearing and housing
13	PAS222	Yoke
14	PAS188	Washer
15	PAS907	Lock washer
16	PAS190	Screw
17	700.017	Right pedal stop
18	850.033	Cage nut
19	PAS188	Washer

Pos	Part No.	Description
20	PAS907	Lock washer
21	PAS190	Screw
22	PAS51	Swivel caster
23	PAS266	Split pin
24	PAS264	Support
25	PAS19	Pin
26	PAS31	Spring
27	PAS63	Tie rod
30	PAS257	Pedal bracket
31	PAS256	Squeegee pedal
32	PAS265	Cross member
33	PAS280	Elastic pin
34	PAS195	Lever
35	PAS155	Lever
36	PAS259	Cam
37	430.109	Bracket
38	PAS147	Screw
39	PAS14	Pedal cover

Pos	Part No.	Description
40	PAS64	Knob
41	PAS907	Lock washer
42	PAS212	Nylon washer
43	PAS33	Knob
44	PAS34	Regulator, squeegee
45	PAS213	Stainless steel screw
46	PAS214	Support
47	PAS188	Washer

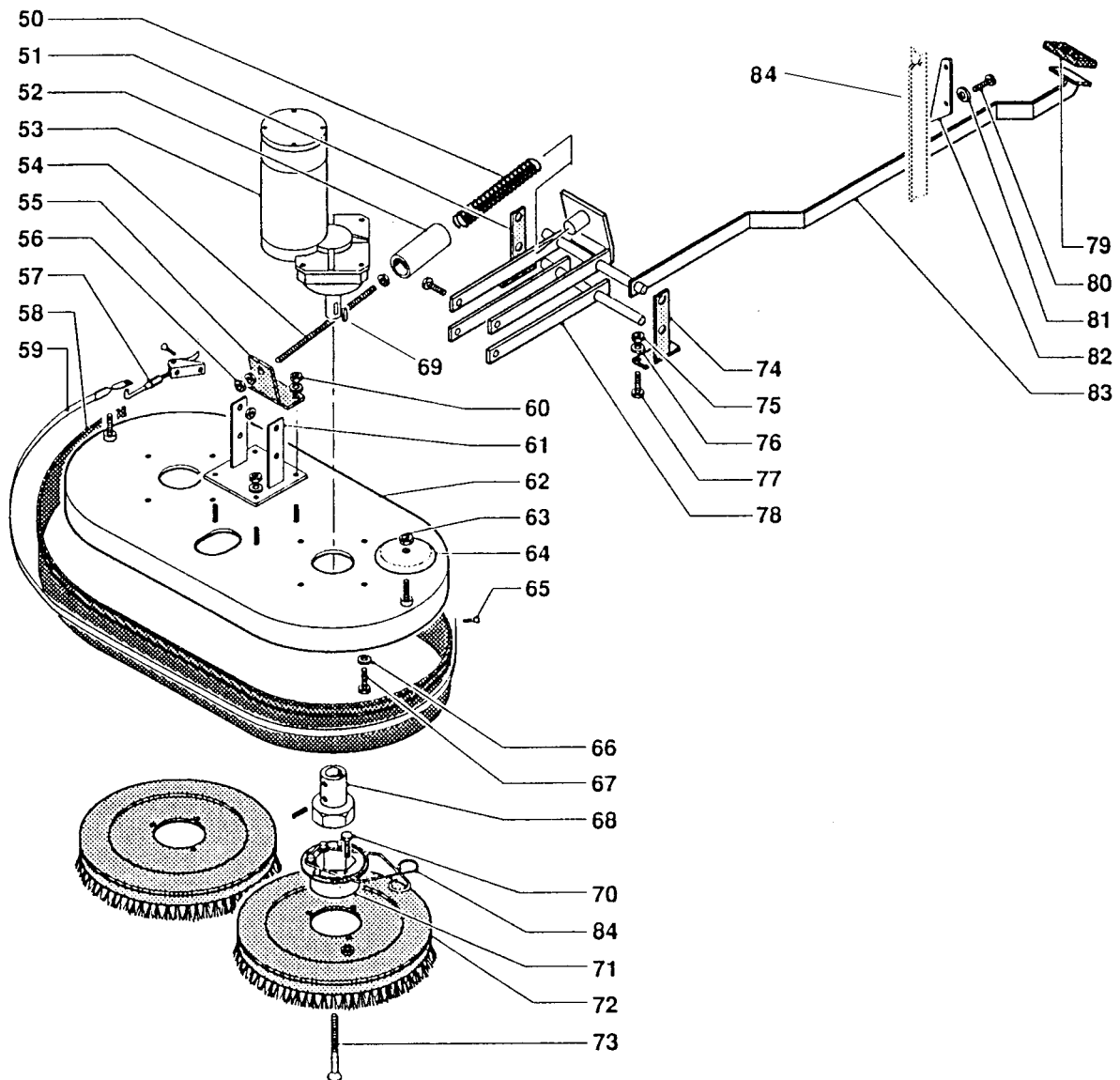
SPARE PARTS
 Model PAS28 with serial number
 above 05-97-01616



Pos	Part No.	Description
1	PAS122	Hook
2	PAS177	Back Frame
3	700.003	Yoke
4	700.004	Frame
5	700.005	Support
6	700.006	Left pedal stop
7	PAS221	Drive motor (*)
8	PAS220	Differential gear (*)
(*)	PAS60	Drive motor, differential
9	PAS223	Screw
10	PAS61	Bearing and housing
11	PAS62	Wheel
12	PAS61	Support
13	PAS222	Yoke
14	PAS188	Washer
15	PAS907	Lock washer
16	PAS190	Screw
17	700.017	Right pedal stop
18	850.033	Nut Clip

Pos	Part No.	Description
19	PAS188	Washer
20	PAS907	Lock washer
21	PAS190	Screw
22	PAS51	Caster/Steel Housing
23	PAS266	Split pin
24	PAS31	Spring
25	PAS63	Pin/Tie Rod
26	PAS176	Nut
27	PAS176	Nut
30	PAS212	Washer
31	PAS33	Ring Nut
32	PAS34	Regulator
33	PAS280	Support
34	PAS195	Support, stud
35	PAS155	Support
36	PAS257	Bracket
37	430.109	Spring
38	PAS147	Stop

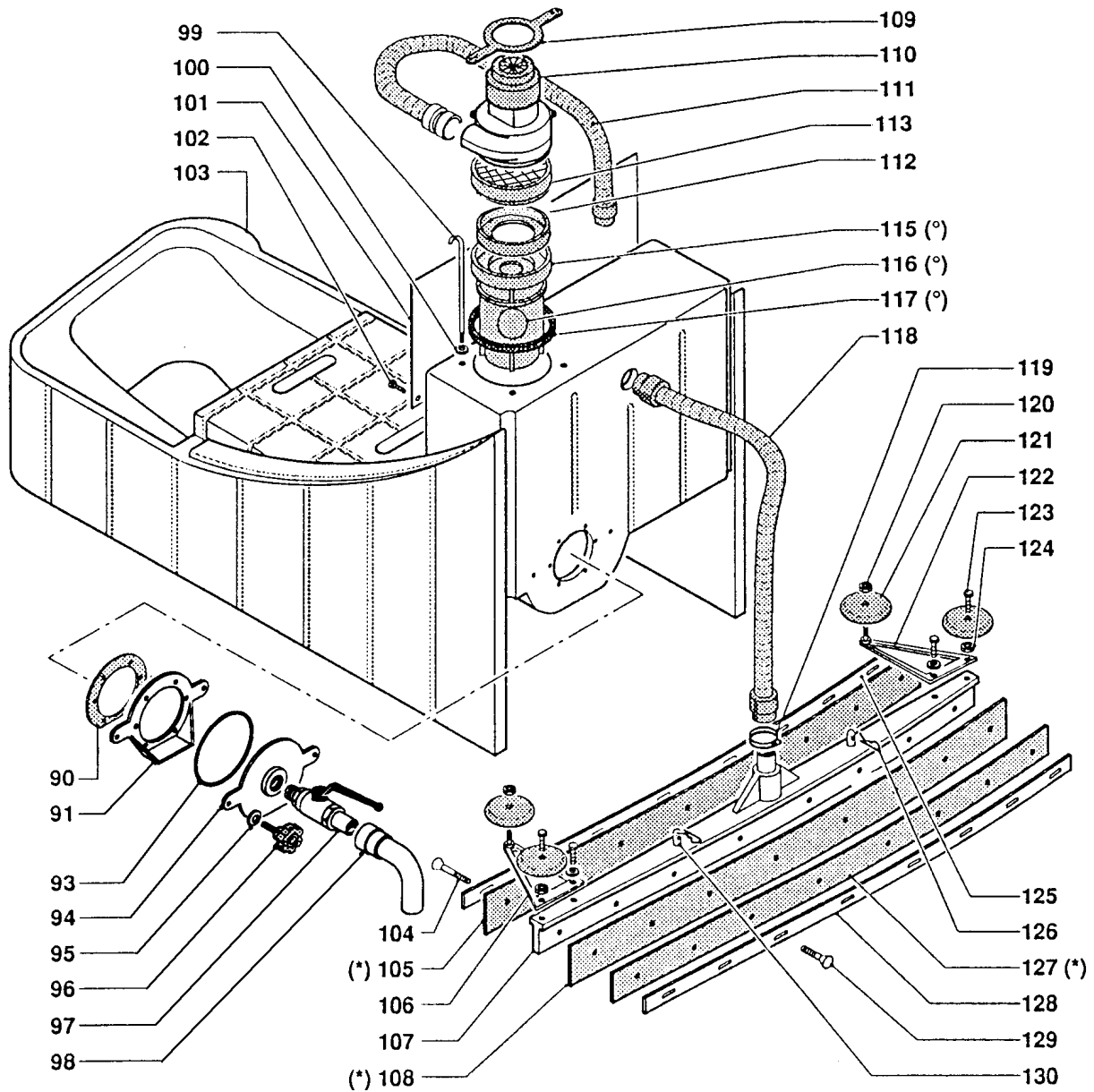
Pos	Part No.	Description
39	PAS14	Tie rod
40	PAS64	Pedal cover
41	PAS14	Foot Pedal
42	PAS918	Pin
43	PAS65	Pressure regulator, squeegee
44	PAS66	Lever
45	PAS213	Support
46	PAS214	Support
47	430.118	Lever
247	PAS170	Regulator
248	PAS168	Cable
249	PAS176	Nut
250	PAS178	Brake Support
251	PAS174	Rubber tube
252	PAS173	Clamp
253	PAS63	Pin/Tie Rod
254	501.141	Spring



Pos	Part No.	Description
50	PAS156	Pressure spring
51	650.112	Right support
52	650.105	Spring support
53	PAS4	Geared motor
54	PAS163	Tie rod
55	PAS164	Support
56	850.058	Nut
57	PAS122	Hook & Latch
58	PAS2	Bumper
59	PAS108	Strap, Bumper
60	PAS176	Nut
61	PAS165	Support
62	PAS225	Motor plate
63	PAS924	Nut
64	PAS1	Vibration damper wheel
65	PAS926	Screw
66	PAS146	Washer

Pos	Part No.	Description
67	430.072	Screw
68	PAS5	Coupling, half
69	PAS101	Key, machine
70	PAS65	Screw
71	PS 6A	Support with short spring
72	PAS67	Poly Scrub brush (2 brushes per set)
72	PAS68	Nylo Grit 2 brushes
72	PAS130	Strata Grit 2 brushes
72	PAS94	Scrub Grit II 2 brushes
72	PAS69	Pad holder
72	PAS133	Powr-Scruff brush
73	PAS111	Bolt
74	650.114	Left support
75	PAS176	Nut
76	PAS188	Washer

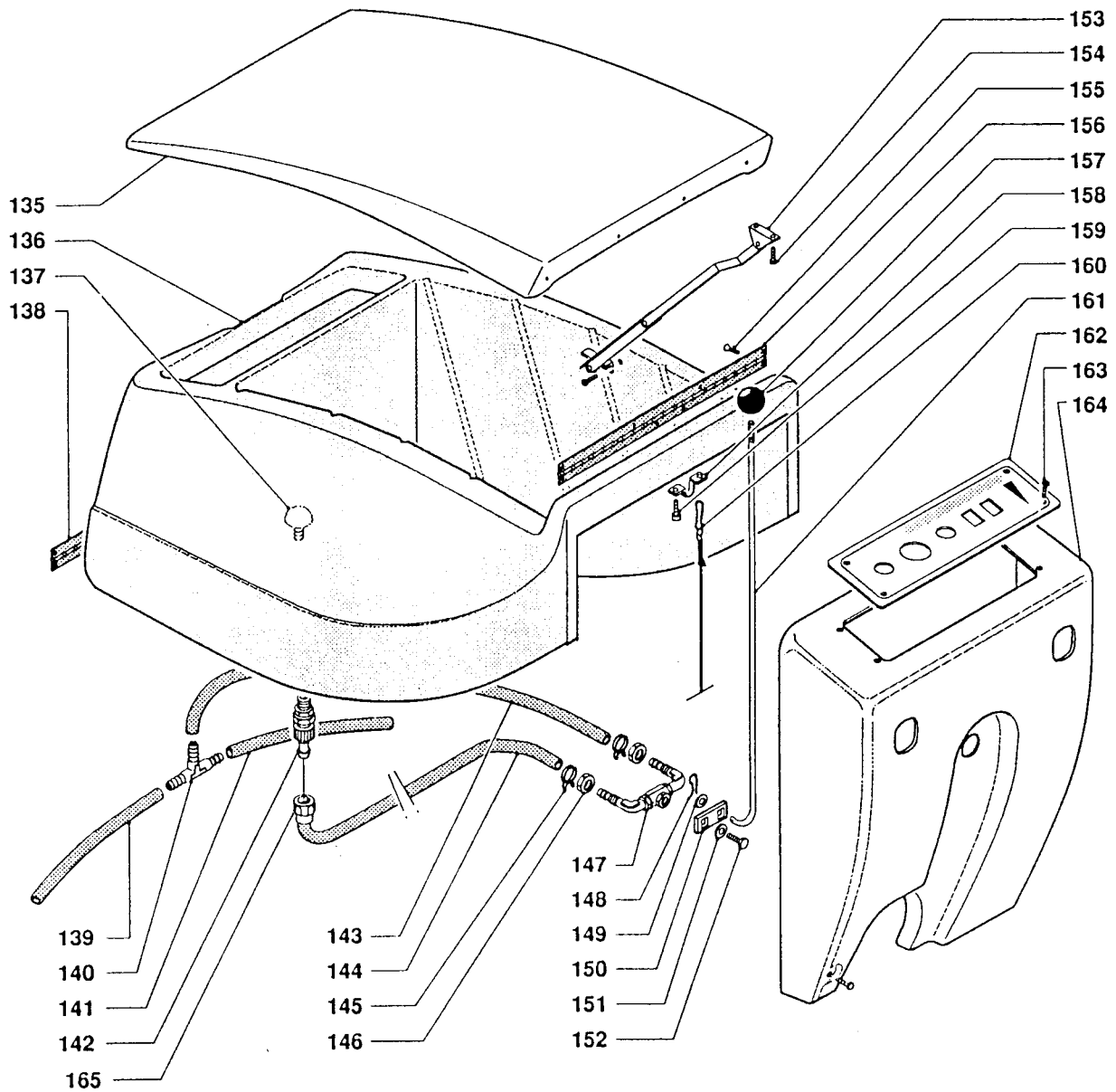
Pos	Part No.	Description
77	PAS167	Screw
78	650.113	Lower lever
79	PAS14	Foot Cover
80	PAS147	Screw
81	430.109	Washer
82	PAS258	Cam
83	650.108	Brush lift pedal
84	PAS7	Spring for support



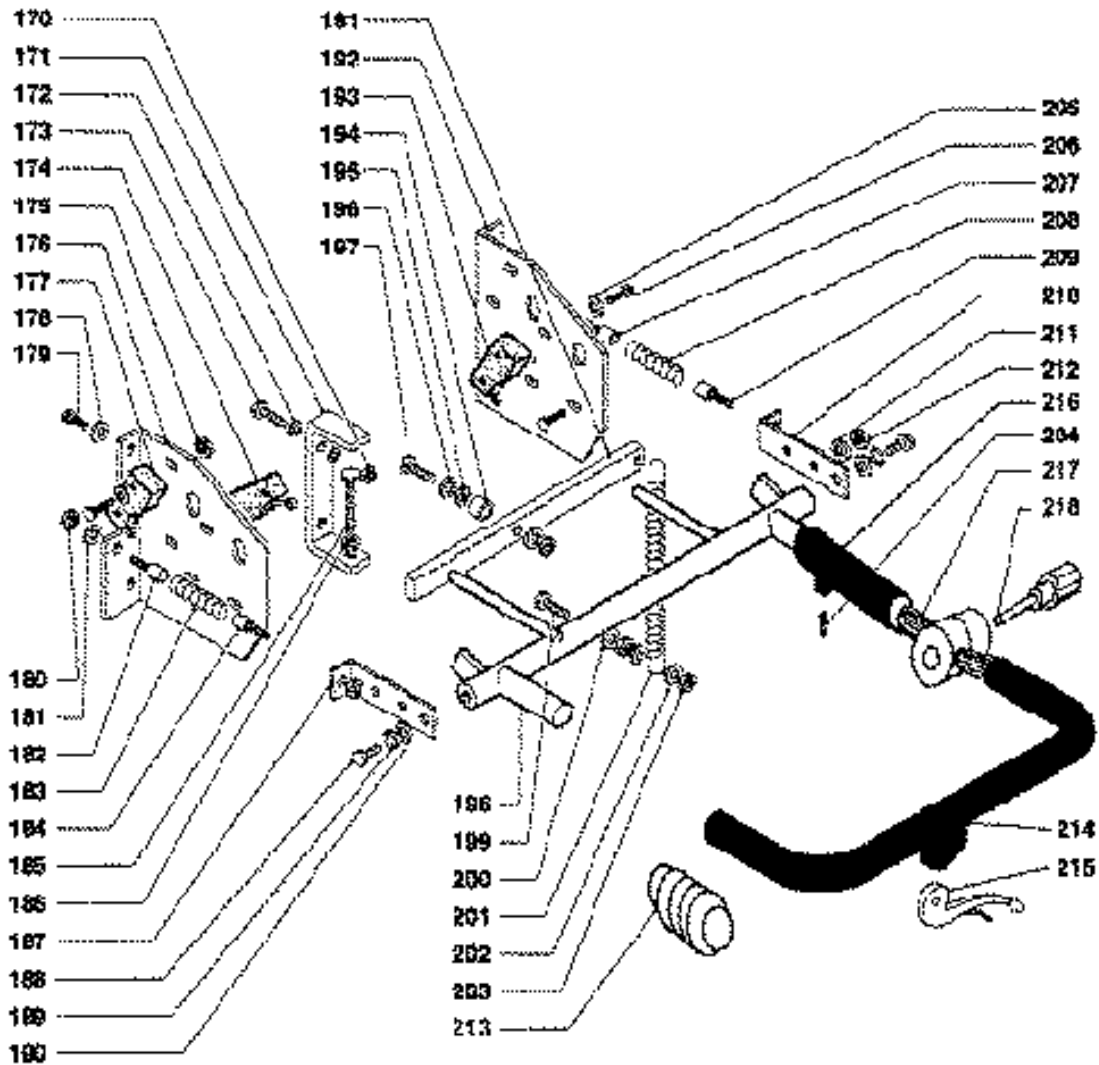
Pos	Part No.	Description
90	PAS70	Seal
91	PAS71	Fixed flange
93	PAS72	Seal
94	PAS73	Movable flange
95	PAS186	Washer
96	PAS74	Knob
97	PAS75	Dump valve
98	PAS187	Fitting
99	PAS150	Tie rod
100	PAS146	Washer
101	700.101	Plate
102	PAS147	Screw
103	700.103	Water collection tank
104	PAS223	Screw
105	PAS145	Black rubber (*) ▲
106	PAS181	Left vibration damper

Pos	Part No.	Description
107	PAS77	Squeegee body ▲
108	PAS143	Para rubber (*) ▲
109	PAS15	Motor stop ring
110	1924	Vac motor
111	PAS37	Flex hose
112	PAS102	Motor seal
113	F909	Screen/Filter
115	PAS85	Float support (°)
116	PAS210	Float (°)
117	PAS103	Seal (°)
(°)	PAS17	Complete float
118	PAS80	Intake hose
119	PAS191	Hose clamp
120	PAS935	Nut
121	PAS1	Vibration damper wheel

Pos	Part No.	Description
122	PAS182	Right vibration damper
123	PAS936	Screw
124	PAS937	Nut
125	650.178	Outer bar
126	PAS959	Split pins
127		Optional Squeegee Blade (*) ▲
(*)	PAS76	Squeegee Blade Set
128	650.181	Outer bar
129	PAS223	Screw
130	PAS942	Support stud
131	700.131	Tank
▲	PAS78	Squeegee assembly complete
▲	PAS90	Heater
▲		Not Illustrated



Pos	Part No.	Description	Pos	Part No.	Description	Pos	Part No.	Description
135	PAS806	Lid	146	400.161	Nut	157	PAS11	Knob
136	PAS805	Solution tank	147	PAS12	Solution Valve	158	700.158	Support
137	PAS3	Filter	148	500.056	Split pin	159	430.056	Screw
138	700.138	Hinge	149	PAS146	Washer	160	700.160	Hook and cord
139	PAS288	Hose	150	500.051	Lever	161	PAS155	Rod
140	PAS82	Hose fitting	151	500.053	Washer	162	PAS161	Control panel
141	PAS288	Hose	152	500.054	Screw	163	PAS153	Screw
142	PAS83	Quick coupling	153	PAS84	Lid support/Hinge	164	700.164	Housing
143	PAS288	Hose	154	PAS153	Screw			
144	PAS288	Hose	155	700.155	Screw			
145	430.091	Hose collars	156	PAS110	Hinge			



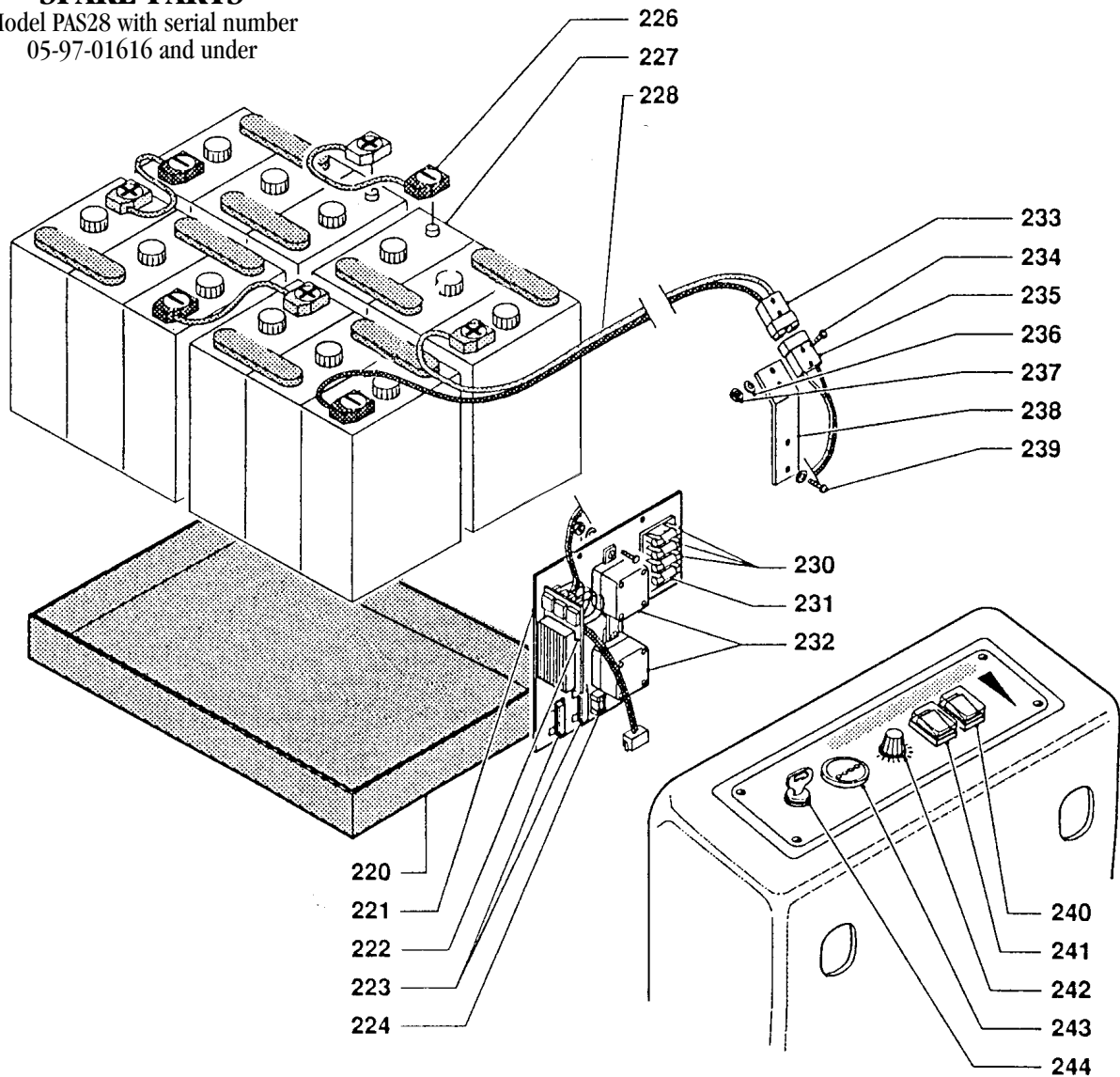
ref#	order	description	each
170	430.025	Nut	.10
171	850.444	Support	.10
172	PAS146	Washer	.10
173	PAS223	Screw	.10
174	PAS56	Micro switch	.10
175	430.296	Nut	.10
176	850.468	Handle support	.10
177	PAS56	Micro switch	.10
178	PAS146	Washer	.10
179	430.072	Screw	.10
180	PAS149	Nut	.10
181	PAS146	Washer	.10
182	700.182	Screw	.10
183	850.445	Spring	.10
184	700.182	Screw	.10
185	650.372	Screw	.10
186	PAS176	Nut	.10
187	850.446	Souare	.10
188	PAS936	Screw	.10
189	PAS907	Lock washer	.10
190	PAS188	Washer	.10
191	PAS136	Yoke	.10
192	850.496	Handle support	.10
193	PAS56	Micro interrupteur	.10
194	PAS138	Spacer	.10

ref#	order	description	each
195	PAS935	Nut	.10
196	PAS137	Washer	.10
197	PAS936	Screw	.10
198	650.422.1	Lever	.10
199	PAS197	Screw	.10
200	PAS146	Washer	.10
201	PAS139	Spring	.10
202	PAS146	Washer	.10
203	PAS149	Nut	.10
204	430.16	Dowel	.10
205	430.297	Washer	.10
206	430.299	Screw	.10
207	700.182	Screw	.10
208	850.445	Spring	.10
209	700.182	Screw	.10
210	850.446	Souare	.10
211	700.211	Washer	.10
212	PAS149	Nut	.10
213	650.423.1	Rubber tube	.10
214	430.323.1	Handle	.10
215	PAS166	Brake lever	.10
216	PAS338	Handle	.10
217	PAS339	Coupling	.10
218	PAS337	Knob	.10

* call for price and availability

SPARE PARTS

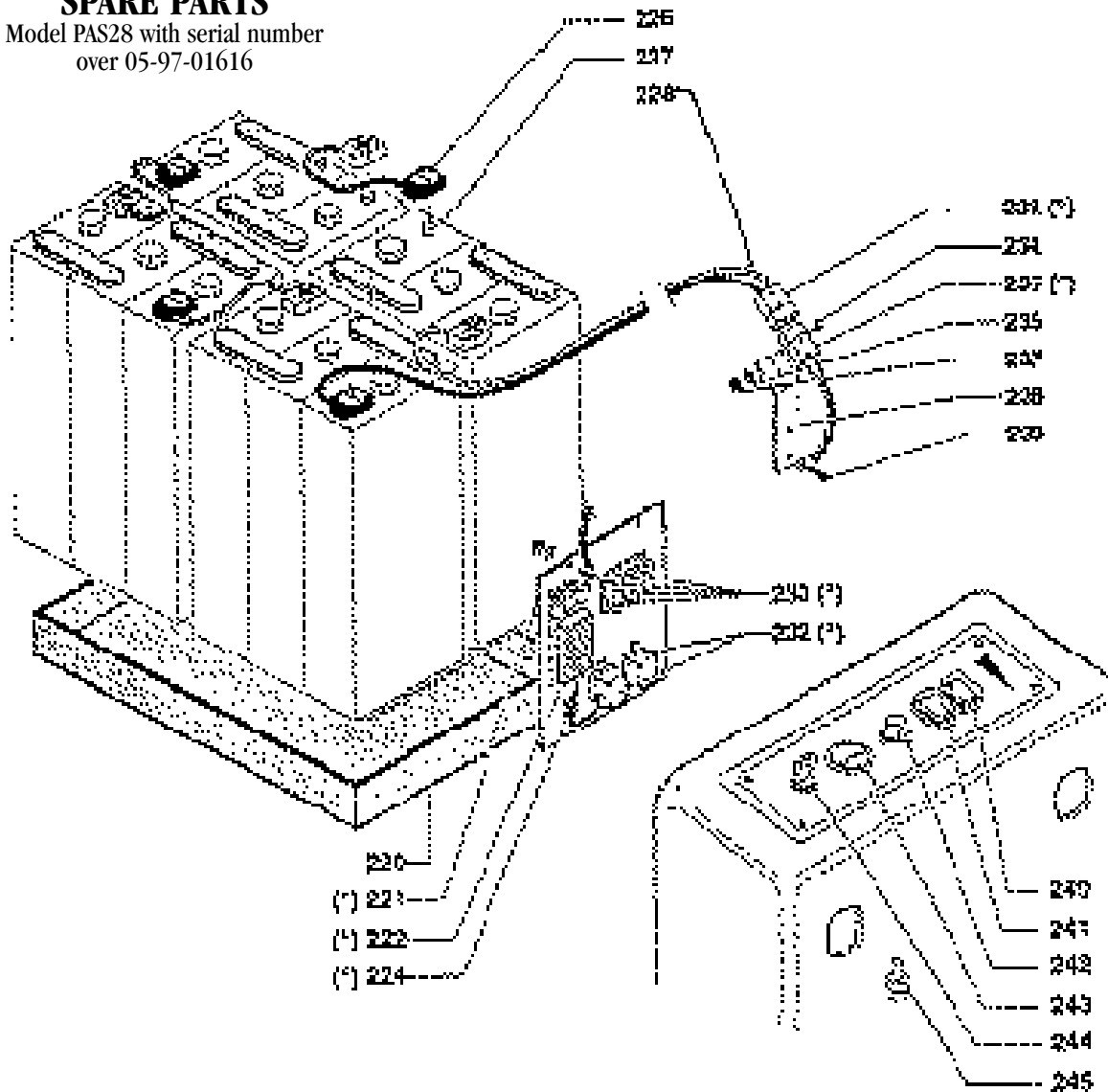
Model PAS28 with serial number
05-97-01616 and under



Pos	Part No.	Description	Pos	Part No.	Description
220	PAS86	Battery tray	238	650.328	Yoke
221	PAS218	Component support	239	430.072	Screw
222	PAS87	Micro Processor	240	PAS54	Vac switch
224	PAS119	6.3 Amp Fuse	241	PAS54	Brush switch
226	PAS141	Cable Jumper	242	PAS88	Knob
228	PAS140	Neg. & Pos. cable	243	PAS89	Battery gauge
230	PAS117	16 Amp Fuse	244	PAS53	Master switch
231	PAS118	20 Amp Fuse			
232	PAS57	Solenoid			
233	PAS59	Connector			
234	430.299	Screw			
235	PAS59	Connector			
236	430.297	Washer			
237	430.296	Nut			

SPARE PARTS

Model PAS28 with serial number
over 05-97-01616



Pos	Part No.	Description	Pos	Part No.	Description
220	PAS86	Battery tray	238	650.328	Yoke
221	PAS218	Component support	239	430.072	Screw
222	PAS87	Micro Processor	240	PAS54	Vac switch
224	PAS119	6.3 Amp Fuse	241	PAS54	Brush switch
226	PAS141	Cable Jumper	242	PAS88	Knob
228	PAS140	Neg. & Pos. cable	243	PAS89	Battery gauge
230		30 Amp ATC Fuse	244	PAS53	Master switch
232	PAS57	Solenoid			
233	PAS59	Connector			
234	430.299	Screw			
235	PAS59	Connector			
236	430.297	Washer			
237	430.296	Nut			

Microprocessor Diagnostic Signals

The Model PAS28 with serial numbers above 05-97-01616 have an on board diagnostic system as standard equipment. The number of light flashes denotes service location.

1	Flash	Microswitches
2	Flashes	Batteries discharged
3	Flashes	Code not in use
4	Flashes	Traction motor
5	Flashes	Microprocessor
6	Flashes	Potentiometer
7	Flashes	Microprocessor to hot
8	Flashes	Traction motor is moving
9	Flashes	Software Problem



A Tacony Company

3101 Wichita Court • Ft. Worth, TX 76140-1710