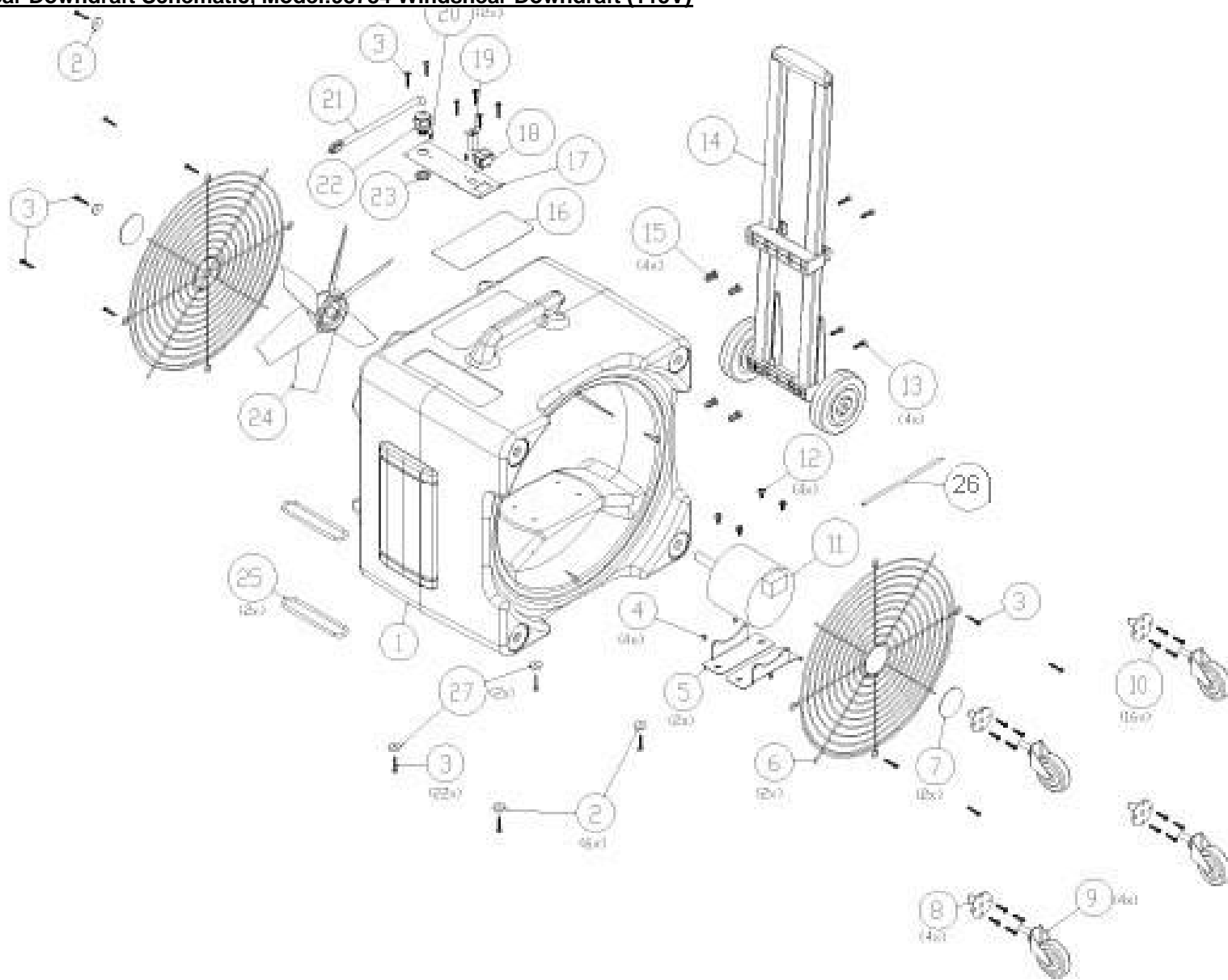


Windshear Downdraft Schematic

Model :98784 Windshear Downdraft (115V)

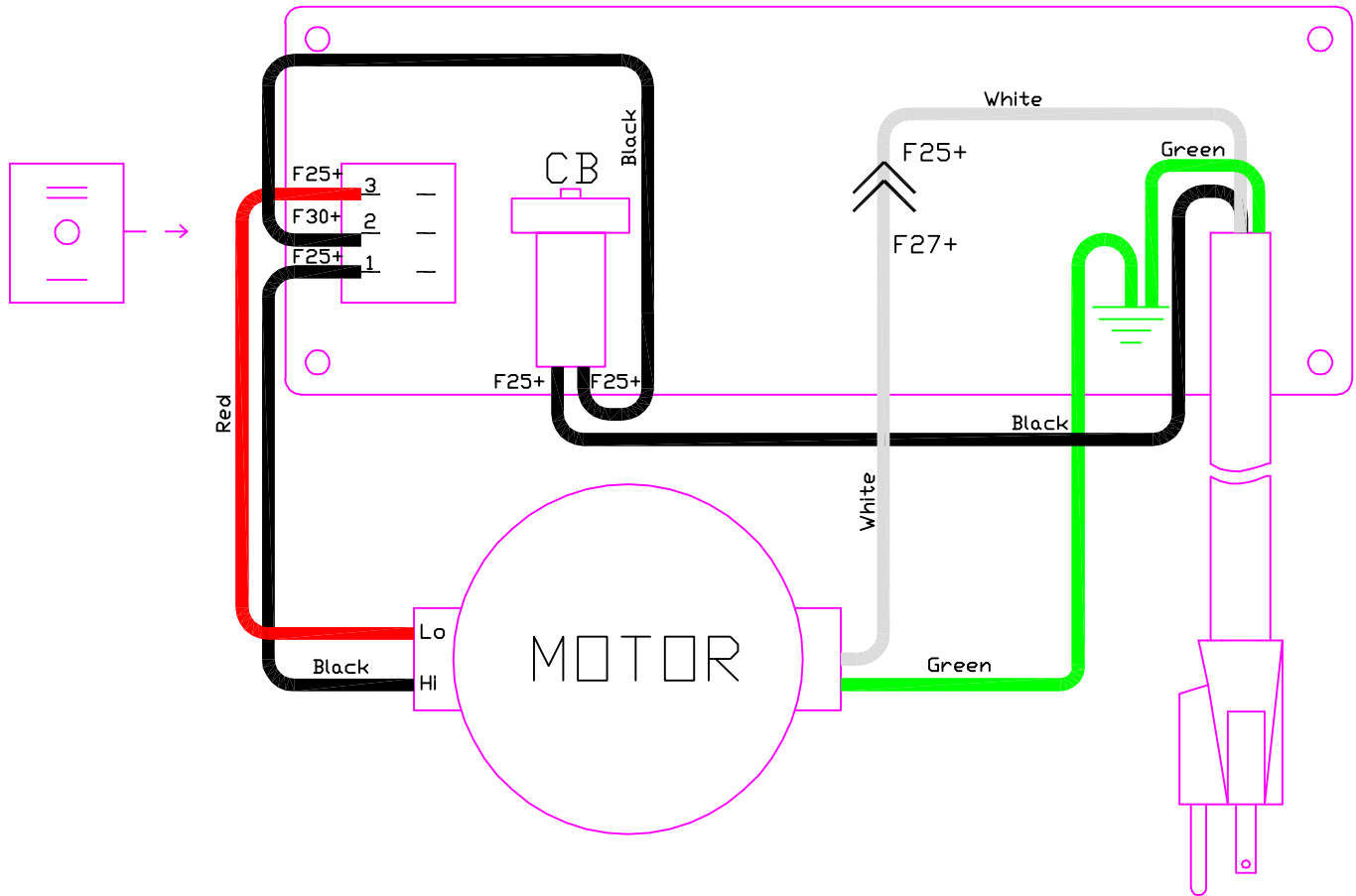
	Number	Description	Qty Req.
1	X9180+	HOUSING F5 AXIAL FAN BLACK	1
2	PD3C+	FOOT BLACK RUBBER N/S DRYER HANDLE SHORT	1
3	X9098+	SCREW A POINT PH PAN HD #10X1	1
4	X8260+	NUT 8-32 LOCK W/NYLON INSERT	1
5	72719A	BRACKET AXIAL FAN MOTOR F5	1
6	X9183+	GRILL F5, AXIAL FAN	1
7	X9189+	Label, Round (at Grill)	1
8	X9195+	CASTER RECEIVER F5, AXIAL FAN	1
9	X9240+	4 X 15/16 SWIVEL CASTER	1
10	72020A	SCREW SELF-TAP PHMS ZINC #12 X 1"	1
11	X9181+	MOTOR 115VAC .25HP 4 POLE F5, AXIAL FAN W/THRUBOLTS	1
12	X8209S+	1/4-20 X 1/2" SERRATED HEX SELF LOCKING FLANGE SCREW	1
13	X9065+	SCREW HEX SOCKET CAP 1/4-20X1 FACTORY BLACK	1
14	X8990N+	HANDLE/WHEEL ASSEMBLY NARROW AXIAL FAN (2 PER BOX)	1
15	X8848+	JACKNUT 1/4-20 STEEL #8LJN	1
16	X9190+	Label, Product at Top, Axial Fan	1
17	72721B	PANEL SWITCH EURO F5 AXIAL FAN	1
18	X9048+	SWITCH ROCKER SPOTTER	1
19	X9262+	CIRCUIT BREAKER 5A F6 AXIAL FAN	1
20	X9188+	SCREW 6-32 X 3/8" BLACK MS	1
21	X8926+	20' HD 3 WIRE CORD 16/3 SJTW 115 VOLT (NEW DRYER)	1
22	PD8+	STRAIN RELIEF 1/2" NPT SCE	1
23	X8008N+	NUT LOCK 1/2" STEEL CONDUIT APPLETON	1
24	X9182-6+	FAN BLADE ASSEMBLY F6 AXIAL 6 BLADE	1
25	F631+	Round Belt	1
26	72470A	HEAT SHRINK BLK 1/2" X 200' FLEXIBLE POLYOLEFIN	1
27	PD3B+	DRYER FOOT N/S DRYER TALL	1
28	X9181-2+	Motor, 230V, 25HP 4 Pole	1
29	71912A	Cord 14/3 35' Black w/ Euro Plug	1

Windshear Downdraft Schematic, Model:98784 Windshear Downdraft (115V)



SCHEMATIC USED FOR THE FOLLOWING MACHINES:

PDF6WRD+	PDF6WRD-CF+	-	-
PDF6WRD-2+	WFC6WRDH4	-	-
PDF6WRD-2B+	10460A	-	-
PDF6WRD-C+	10461A	-	-



REV	DATE	ECN	DESCRIPTION	BY	Powr-Flite COMMERCIAL FLOOR CARE EQUIPMENT		
-	-	-	-	-	3101 Wichita Court Fort Worth, TX 76140-1755		
-	-	-	-	-	MATERIAL	FINISH	SCALE
-	-	-	-	-	DWN	DATE	SHT
XX ±0.02 IN. RADII XX ±0.02 XXX ±0.01 IN. XXX ±0.01 XXXX ±0.005 IN. COMMON & CONCENTRIC TO 0.002" XXXXX ±0.0005 IN. ± 0°30'				POWR-FLITE CORPORATION CLAIMS PROPRIETARY RIGHTS IN THE MATERIAL DISCLOSED HEREIN. THIS DRAWING IS ISSUED FOR ENGINEERING INFORMATION ONLY. IT MAY NOT BE REPRODUCED, NOR MAY THE INFORMATION HEREIN BE USED FOR MANUFACTURING PURPOSES WITHOUT WRITTEN PERMISSION FROM POWR-FLITE CORP.			
DESCRIPTION					WPF0031		REV
A PART NUMBER					WIRING DIAGRAM		-