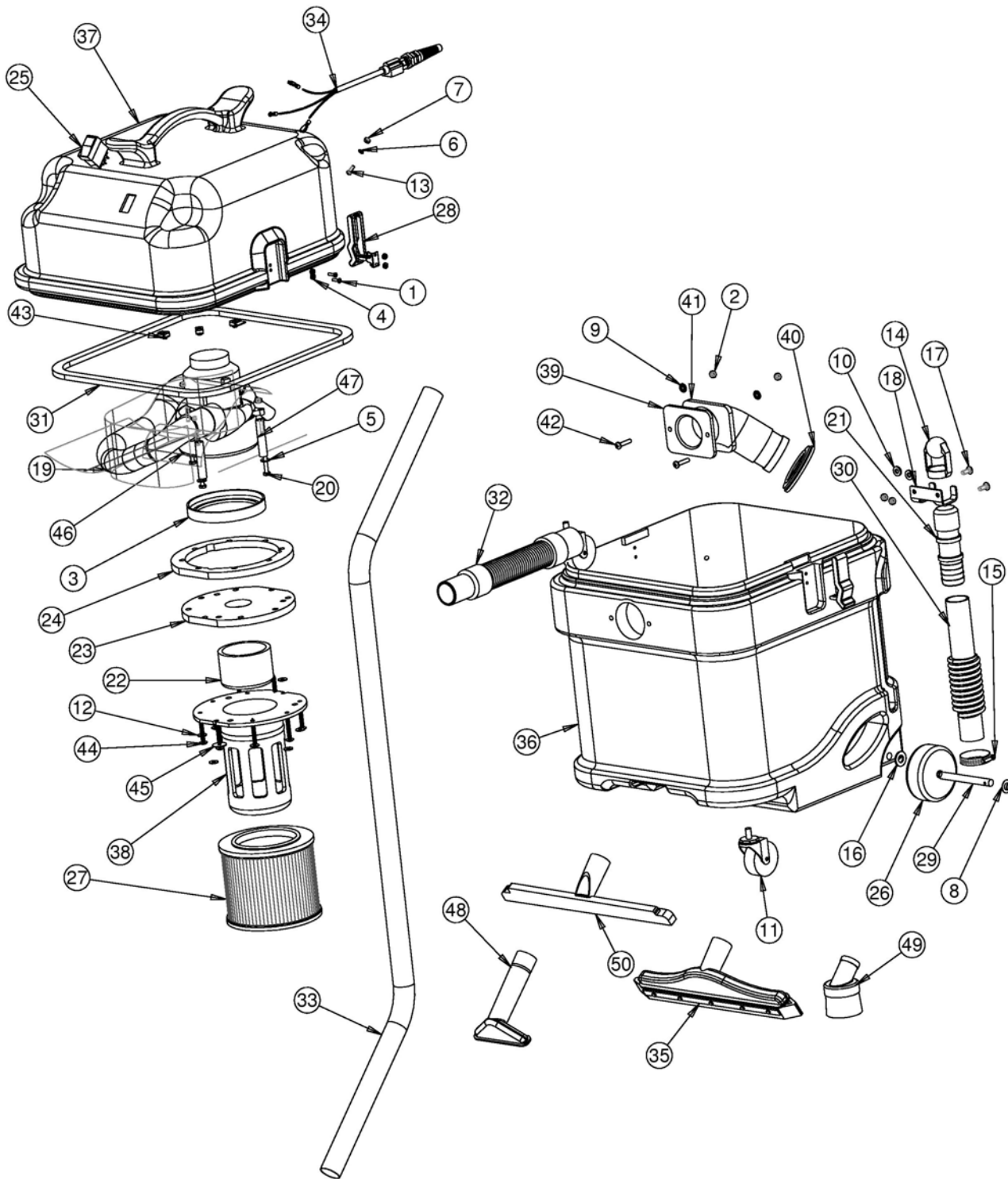


Main Assembly

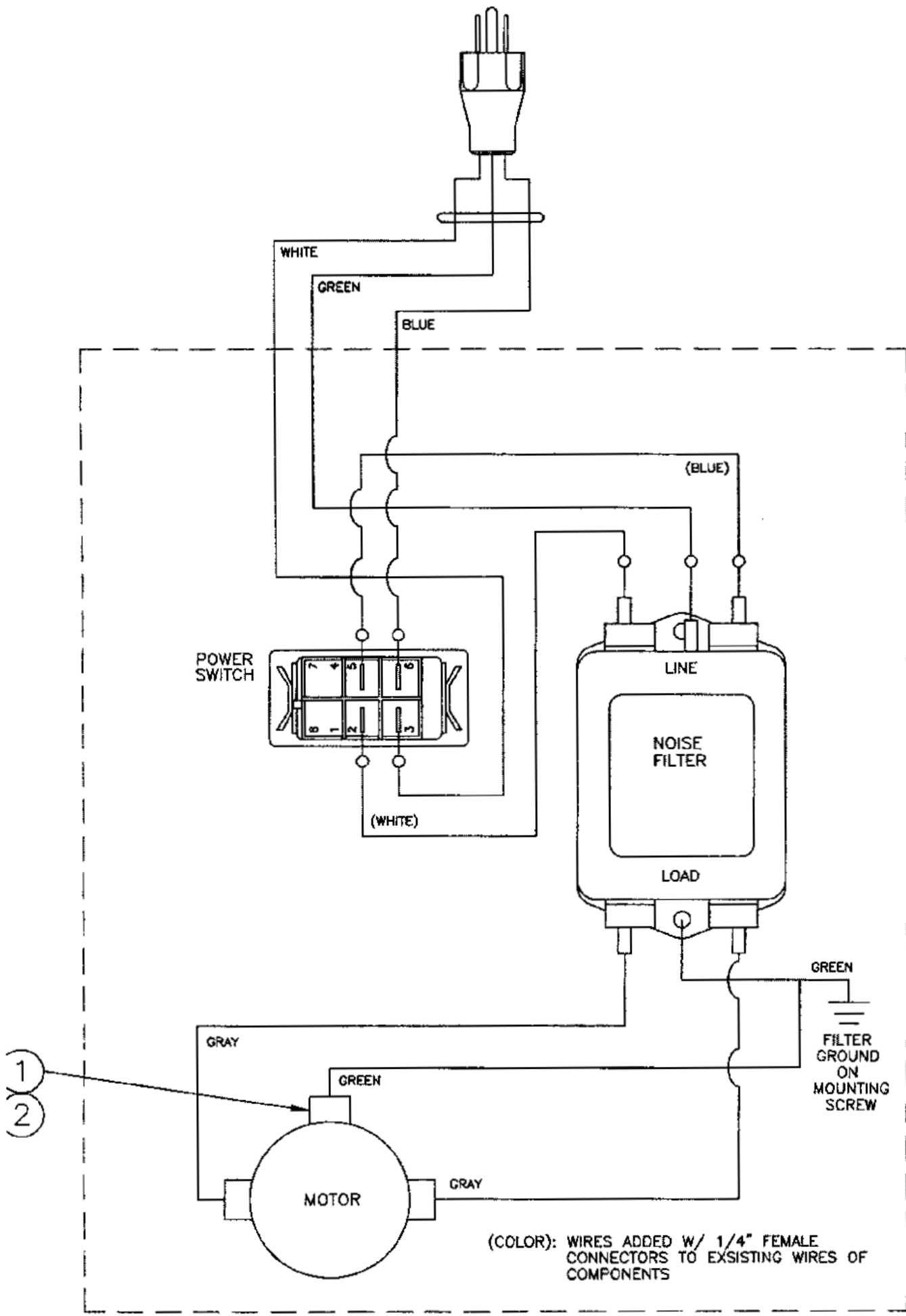
Model :94225 Taskforce 1700 Wet/Dry (17 Gallon) - Series D only

	Number	Description	Qty Req.
1	01451	SCREW-PHIL. PAN HD MACH #8-32 X 5/8 (ZP)	8
2	01497	NUT-FINISHED HEX 1/4-20 (NICK)	7
3	02941	GASKET - MOTOR	1
4	02956	NUT-HEX.LOCK(KEPS) # 8-32	8
5	03218	WASHER-PLAIN 1/4 ID (ZP)	3
6	03487	WASHER-PLAIN 3/16 ID (ZP)	1
7	5025	NUT-HEX JAM3/8-16 (ZP)	1
8	07539	NUT-PUSH 1/2	2
9	07741	WASHER-SEALING 1/4	2
10	10260	WASHER-SEALING FOR 5/16 SCREW	2
11	10669	CASTER-SWIVEL GREY WHEEL (94220 225)	2
12	11219	WASHER-PLAIN #10 ID (ZP)	6
13	12896	SCREW-PHIL. RND HD MACH #10-32 X 5/8 (ZP)	1
14	16089	STOPPER RETAINED PLUG DRAIN HOSE	1
15	16091	CLAMP-HOSE(SCREW) 1-1/4-2(LINED)	1
16	16581	WASHER-PLAIN .563 ID (SS)	2
17	16619	SCREW-PHIL. TRUSS HD 1/4-20 X 3/4 (ZP)	2
18	17273	BRACKET-DRAIN HOSE RETAINING	1
19	17503	HOSE-STEEL SUPPORTED BLK 1-1/2 X 32.50 W/CUFFS	1
20	17644	SCREW-HEX HD CAP 1/4-20 X 4.25 (ZP)	3
21	18563	NOZZLE-DRAIN HOSE (HM-4000 _F/K'S)	1
22	30234	FLOAT (BLK) ORDER W/ 30631	1
23	30239	GASKET-MOTOR(.5THK.PVC) (94220,225-)NO ADHESIVE	1
24	30240	GASKET-MOTOR LID(8O.D.) (94220,225-) W/ADHESIVE	1
25	30241	SWITCH-ROCKER ON/OFF(DP) (WETDRY) 10A/250,15/125	1
26	30243	USE #14817WHEEL-4"DIA BLACK POLY	2
27	30244	FILTER-CELLULOSE PLASTIC (WETDRY) FLTR: FA-6042A	1
28	30245	LATCH-PLASTIC (BLACK) (94220-)	2
29	30248	PIN-CLEVIS 1/2D X 4-3/4LONG (ZP)	2
30	30253	HOSE-BELLOWS EPDM/BLK 1-1/2 X 10-3/8 LG. CRUSH HOSE	1
31	30255	GASKET MAIN COVER(.38) (94220-) W/ADHESIVE	1
32	30257	HOSE-POLYETHYLENE (BLK) 1-1/2 X 96 W/CUFF	1
33	30258	WAND-ALUMN. FRICTION FIT 1-1/2 X 54LG. (2-PCS)	1
34	30482	ASSEMBLY-POWER CORD 115V (94220 225-) 25'LENGTH	1
35	30486	ASSY-SQUEEGEE 14(PURCH) (94220,225) SERVICE ASSY	1
36	30629	BASE-(YEL) 17 GAL. ORDER W/ 30633	1
37	30631	COVER-VAC (BLK) ORDER W/ 30234	1
38	30633	FLOAT CAGE (YEL) ORDER W/30625 OR 30629	1
39	30804	ELBOW TANK (WET/DRY)	1
40	30824	GROMMET 2 I.D.	1
41	30825	GASKET-SINGLE SIDE ADHE- SIVE (BLACK)	1
42	30826	SCREW-PHIL. PAN HD MACH 1/4-20 X 1-1/4 (BLK.OXD)	2
43	30911	CLIP (WET/DRY)	8
44	30919	SCREW-FORMING TRUSS HD #10-14 X 2L(ZP)	8
45	32165	WASHER-PLAIN #10 I.D. (ZP)	2
46	32932	MOTOR-VACUUM BYPASS SS 2-STAGE 115V/50-60HZ	1
47	33062	SPACER	3
48	90711	TOOL-UPHOLSTERY(1-1/2) (94220,225) PACKAGED	1
49	90712	TOOL-DUSTING RND(1-1/2) (94220 225) POLY BRISTLE	1
50	90714	TOOL-BARE FLOOR(1-1/2) (94220,225) 16W/ADJ.BRS	1
51	19290	TERMINAL-Q.D.FEMALE 1/4 X 16/14GA.(F.I.C.)	2
52	30817	DECAL-TORNADO W/ LOGO 2.25 WIDE X 9.50 LG. WHT	1
53	19364	LABEL-WARNING: TO REDUCE THE RISK OF...	1

Main Assembly, Model:94225 Taskforce 1700 Wet/Dry (17 Gallon) - Series D only



Wiring Diagram, Model:94225 Taskforce 1700 Wet/Dry (17 Gallon) - Series D only



Machine Features

Model :94225 Taskforce 1700 Wet/Dry (17 Gallon) - Series D only

	Number	Description	Qty Req.
1		VAC HEAD	
2		CANISTER	
3	30257	HOSE-POLYETHYLENE (BLK) 1-1/2 X 96 W/CUFF	
4	90714	TOOL-BARE FLOOR(1-1/2) (94220,225) 16W/ADJ.BRS	
5	30486	ASSY-SQUEEGEE 14(PURCH) (94220,225) SERVICE ASSY	
6	90711	TOOL-UPHOLSTERY(1-1/2) (94220,225) PACKAGED	
7	90712	TOOL-DUSTING RND(1-1/2) (94220 225) POLY BRISTLE	
8	30258	WAND-ALUMN. FRICTION FIT 1-1/2 X 54LG. (2-PCS)	
9	19816	CLOTH BAG FOR WIDE ARE VAC	
10	90701	BAG-PAPER DISPOS-10 PACK (93030) TORNADO IND.	

