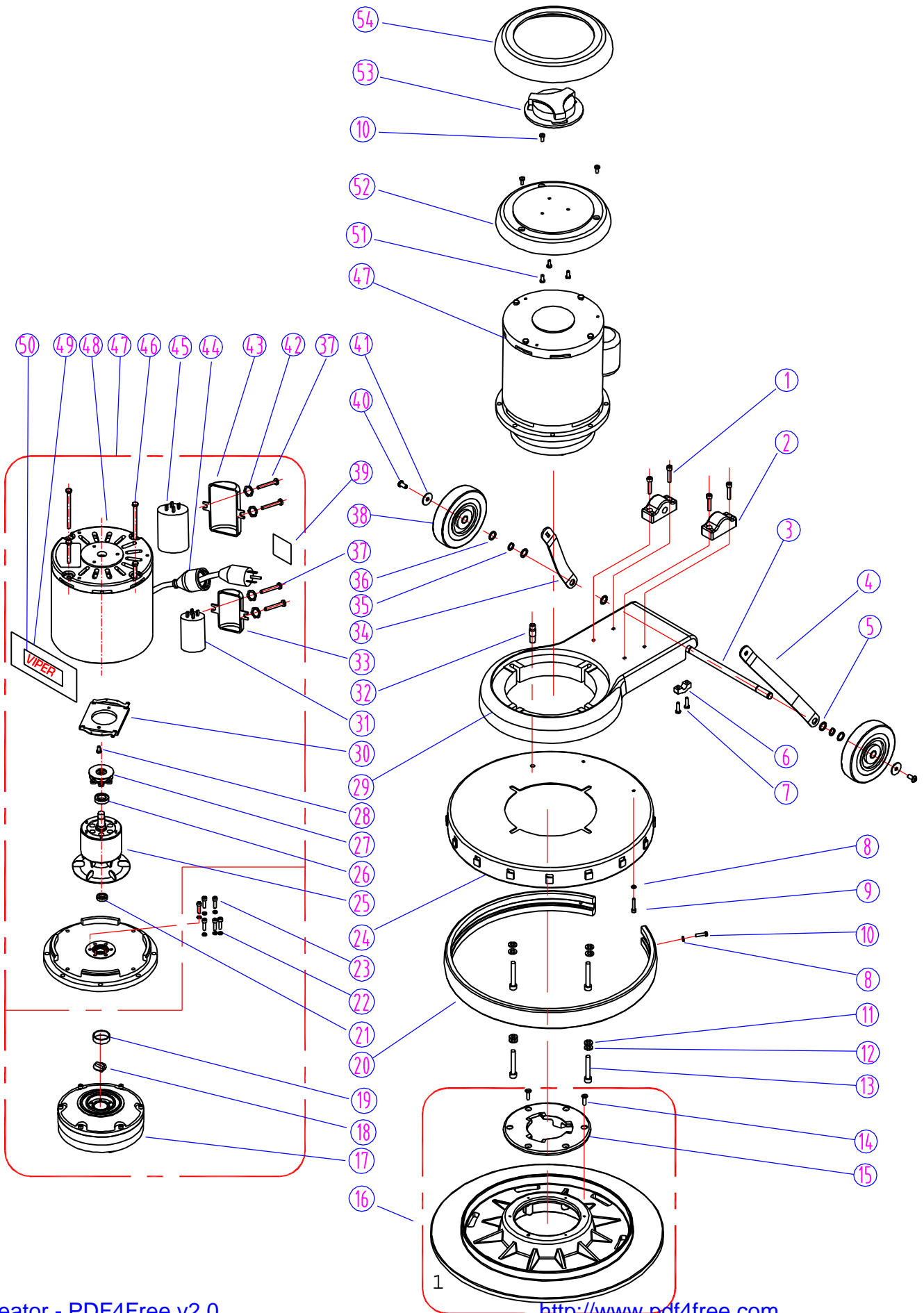


BASE GROUP FOR VN1715 & VN2015

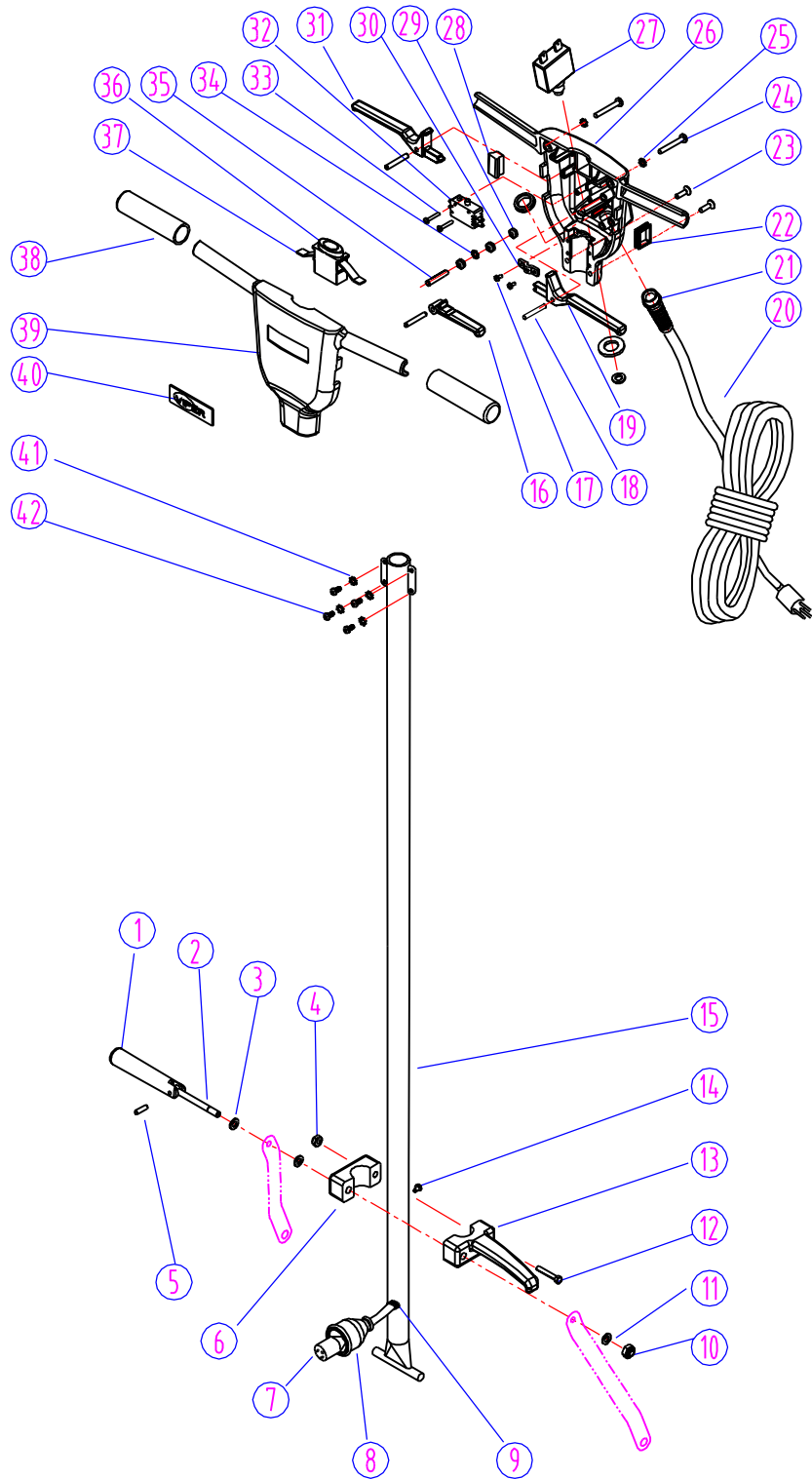


BASE ASSEMBLY - VN1715 & VN2015

| DIA NO | PART NUMBER | DESCRIPTION | NO REQ'D | LIST \$ (ea) |
|--------|-------------|---|----------|--------------|
| 1 | GT13080 | SCREW, M6 X 30 | 4 | \$1.13 |
| 2 | VF30011 | CLAMP BLOCK, HANDLE | 1 | \$7.75 |
| 3 | VF30026 | AXLE | 1 | \$10.50 |
| 4 | VF30020 | BRACKET, LEFT HANDLE | 1 | \$21.00 |
| 5 | VV20274 | WASHER, PLAIN, M13 | 4 | \$2.38 |
| 6 | GV40235 | CLAMP BLOCK, AXLE | 2 | \$1.88 |
| 7 | VV13621 | SCREW, SELF-TAPPING, M5 X 20 | 4 | \$1.13 |
| 8 | VF13474A | WASHER, PLAIN, M5 | 4 | \$1.13 |
| 9 | VF13613 | SCREW, M5 X 20 | 2 | \$1.13 |
| 10 | VA13474 | SCREW, M5 X 16 | 5 | \$1.13 |
| 11 | VF13524 | WASHER, PLAIN, M8 | 4 | \$1.13 |
| 12 | VF13519 | WASHER, LOCK, M8 | 4 | \$1.13 |
| 13 | GT13016 | SCREW, M8 X 55 | 4 | \$1.13 |
| 14 | MF-VF002-4A | SCREW, SELF-TAPPING, 1/4"-1" | 6 | \$1.13 |
| 15 | MF-VF002-2 | CLUTCH PLATE | 1 | \$20.25 |
| 16 | MF-VF022 | PAD HOLDER, 19-INCH, (VN2015) | 1 | \$96.25 |
| | MF-VF021 | PAD HOLDER, 16-INCH, (VN17105) | 1 | \$74.75 |
| 17 | VF999802B | GEAR BOX | 1 | \$354.75 |
| 18 | VF99021 | COUPLER | 1 | \$10.00 |
| 19 | MT01102 | SLEEVE | 1 | \$2.50 |
| 20 | VF30004 | BUMPER, 20-INCH, (VN2015) | 1 | \$11.00 |
| | VF30005 | BUMPER, 17-INCH, (VN1715) | 1 | \$10.50 |
| 21 | VF999821 | BEARING, 6002 LLU | 1 | \$24.50 |
| 22 | VV13601 | WASHER, LOCK, M5 | 6 | \$1.13 |
| 23 | VV13636 | SCREW, M5 X 30 | 6 | \$1.13 |
| 24 | VF30006 | SHROUD, 20-INCH, (VN2015) | 1 | \$68.75 |
| | VF30006A | SHROUD & BUMPER ASSY, 20-INCH | 1 | \$79.75 |
| | VF30007 | SHROUD, 17-INCH, (VN1715) | 1 | \$55.00 |
| | VF30007A | SHROUD & BUMPER ASSY, 17-INCH | 1 | \$66.00 |
| | VF30024A | SHROUD & BUMPER ASSY, 15-INCH (OPTIONAL) | 0 | \$53.63 |
| | VF30023A | SHROUD & BUMPER ASSY, 13-INCH (OPTIONAL) | 0 | \$45.50 |
| 25 | YCQ11200 | ROTOR WITH FAN ASSY | 1 | \$128.00 |
| 26 | YCQ10501 | BEARING, 6203 RZ | 1 | \$23.13 |
| 27 | YCQ10300A | CENTRIFUGAL SWITCH | 1 | \$14.13 |
| 28 | VV20509 | SCREW, M5 X 10 | 2 | \$1.13 |
| 29 | VF30008 | ALUMINIUM BASE, MOTOR | 1 | \$68.75 |
| 30 | YCQ10300B | STATIONARY SWITCH | 1 | \$23.38 |
| 31 | VF999854 | CAPACITOR, RUN, 50uF / 250V | 1 | \$29.63 |
| 32 | VF40152 | HOSE BARB | 1 | \$4.75 |
| 33 | YLQ14601 | MOUNTING FRAME, CAPACITOR, (SMALL) | 1 | \$10.88 |
| 34 | VF30019 | BRACKET, HANDLE, RIGHT | 1 | \$21.00 |
| 35 | VF13520 | WASHER, LOCK | 2 | \$1.13 |
| 36 | VF50119 | WASHER, PLAIN, M12 | 2 | \$1.13 |
| 37 | VF14214 | SCREW, M5 X 8 | 4 | \$1.13 |
| 38 | VF48202 | WHEEL, 5" | 2 | \$22.00 |
| 39 | VF40994 | LABEL, READ MANUAL | 1 | \$1.13 |
| 40 | VF44012 | SCREW, M6 X 12.7 | 2 | \$1.13 |
| 41 | VF13666 | WASHER, M6 | 2 | \$1.13 |
| 42 | VF13604 | WASHER, LOCK, EXTERNAL TOOTH | 4 | \$1.13 |
| 43 | YCQ10615 | MOUNTING FRAME, CAPACITOR, (LARGE) | 1 | \$12.38 |
| 44 | AS41902 | PLUG PROTECTOR, LARGE FEMALE | 1 | \$6.25 |
| 45 | VF999805 | CAPACITOR, START, 400-450UF / 150V, (LARGE) | 1 | \$28.75 |
| 46 | YLQ17507 | BOLT ASSY | 4 | \$2.13 |
| 47 | | SEE #17 & #46 | | |
| 48 | VF999787 | MOTOR, 110V, 1.5HP | 1 | \$464.75 |
| 49 | VF44003 | LABEL, MOTOR | 1 | \$15.75 |

| DIA NO | PART NUMBER | DESCRIPTION | NO REQ'D | LIST \$ (ea) |
|--------|-------------|------------------|----------|--------------|
| 50 | VF41079 | LABEL, VIPER | 1 | \$13.00 |
| 51 | VF14222 | SCREW, M5 X 12 | 3 | \$1.13 |
| 52 | VF30001 | TOP COVER, MOTOR | 1 | \$23.00 |
| 53 | VF30002 | CLUTCH PLATE | 1 | \$10.50 |
| 54 | VF47023 | BUMPER | 1 | \$10.50 |

HANDLE GROUP FOR VN1715 & VN2015



HANDLE ASSEMBLY - VN1715 & VN2015

| DIA NO | PART NUMBER | DESCRIPTION | NO REQ'D | LIST \$ (ea) |
|--------|-------------|-----------------------------|----------|--------------|
| 1 | VF30016 | HANDLE RELEASE | 1 | \$26.75 |
| 2 | VF30015 | BOLT, HANDLE RELEASE | 1 | \$10.50 |
| 3 | VF30018 | WASHER, PLAIN | 2 | \$1.25 |
| 4 | VF13503 | NUT, LOCK, M8 X 5.7 | 1 | \$1.13 |
| 5 | VF30017 | SCREW | 1 | \$1.50 |
| 6 | VF30014 | COVER, HOOK | 1 | \$10.88 |
| 7 | VF45120 | CORD, HANDLE | 1 | \$6.25 |
| 8 | AS41901 | PLUG PROTECTOR, SMALL MALE | 1 | \$6.25 |
| 9 | VF50120 | GROMMET | 1 | \$1.13 |
| 10 | VF13504 | NUT, LOCK, M10 | 1 | \$1.13 |
| 11 | VF13517 | WASHER, PLAIN | 1 | \$1.13 |
| 12 | VF14114 | SCREW, M8 X 55 | 1 | \$2.00 |
| 13 | VF30013 | HOOK, CORD | 1 | \$21.50 |
| 14 | VF13493 | SCREW, M6 X 10 | 1 | \$1.13 |
| 15 | AS112205 | TUBE | 1 | \$37.13 |
| 16 | VF44018 | LEVER, SOLUTION | 1 | \$11.63 |
| 17 | VV13661 | SCREW, M4 X 12 | 2 | \$1.13 |
| 18 | VF48306 | PIN | 3 | \$1.50 |
| 19 | VF44016 | TRIGGER, LEFT, SWITCH | 1 | \$11.63 |
| 20 | VF45119 | CORD, POWER SUPPLY | 1 | \$71.50 |
| 21 | AS22009 | STRAIN RELIEF, CORD | 1 | \$13.00 |
| 22 | VF30108 | GASKET, HANDLE, SOLUTION | 1 | \$1.88 |
| 23 | VF14223 | SCREW, M6 X 25 | 2 | \$1.13 |
| 24 | VF14218 | SCREW, M6 X 45 | 2 | \$1.13 |
| 25 | VF13528 | TOOTH WASHER, M6 | 2 | \$1.13 |
| 26 | VF30102 | REAR COVER, SWITCH HOUSING | 1 | \$71.00 |
| 27 | VF99010C | CIRCUIT BREAKER, 17A | 1 | \$10.88 |
| 28 | VF30109 | COVER | 1 | \$1.88 |
| 29 | GT13013 | NUT, M4 | 3 | \$1.13 |
| 30 | VF48309 | CLAMP, BLOCK | 1 | \$2.63 |
| 31 | VF44017 | TRIGGER, RIGHT, SWITCH | 1 | \$11.63 |
| 32 | VF44203 | SWITCH ASSEMBLY | 1 | \$23.50 |
| 33 | VF14212 | SCREW, M3 X 25 | 2 | \$1.13 |
| 34 | VF13527 | TOOTH WASHER, M4 | 1 | \$1.13 |
| 35 | VF13526 | SCREW, M4 X 30 | 1 | \$1.13 |
| 36 | VF46705 | SAFETY BUTTON | 1 | \$5.25 |
| 37 | GV40218 | SPRING, SAFETY BUTTON | 1 | \$1.50 |
| 38 | VF48310 | HANDLE GRIP | 2 | \$10.88 |
| 39 | VF30101 | FRONT COVER, SWITCH HOUSING | 1 | \$67.00 |
| 40 | VF47035A | LOGO | 1 | \$5.50 |
| 41 | VF13604 | TOOTH WASHER, M5 | 4 | \$1.13 |
| 42 | VF14222 | SCREW, M5 X 12 | 4 | \$1.13 |