

Xtract 500

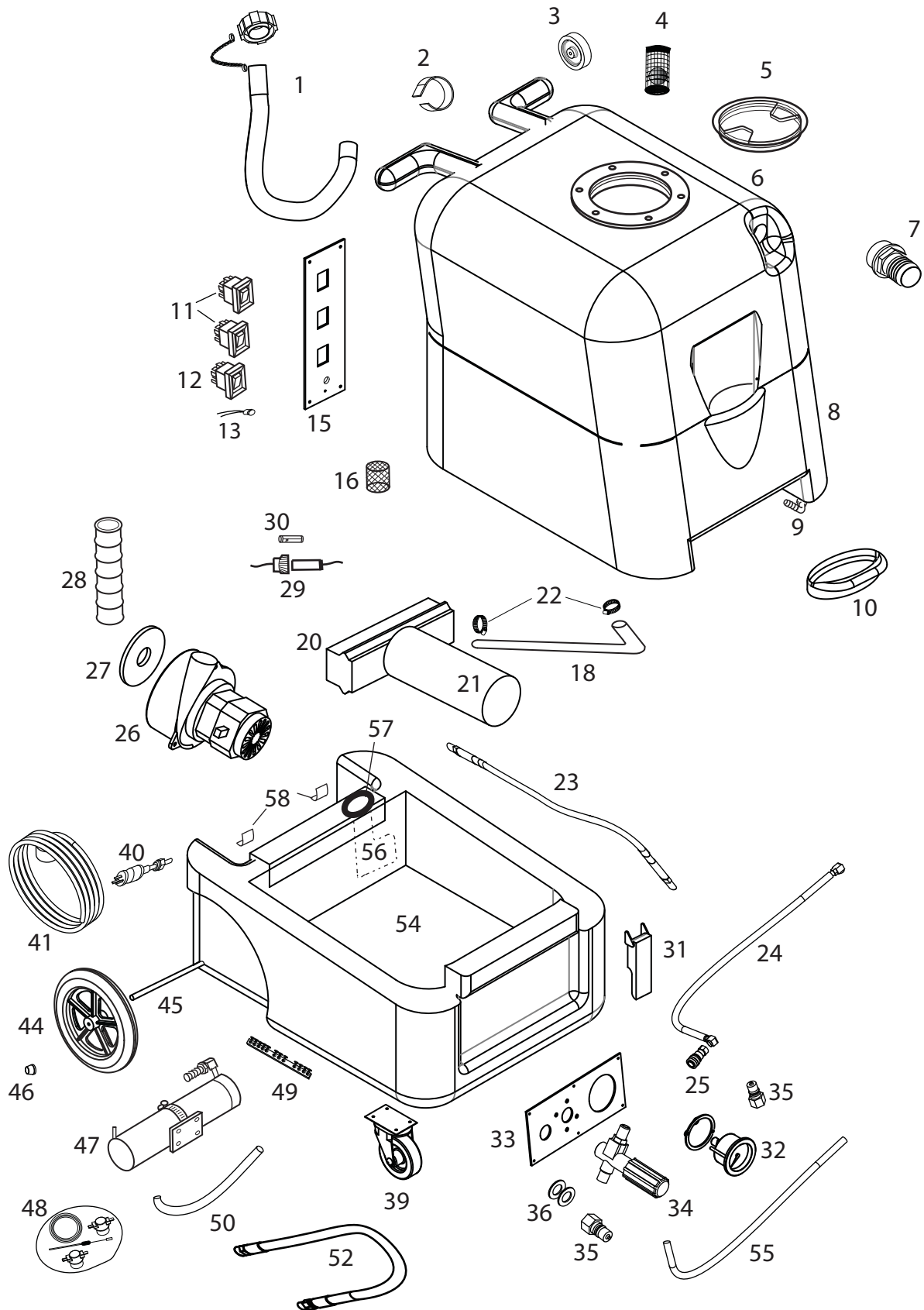
Part List

120V

<u>Item</u>	<u>Part No.</u>	<u>Qty</u>	<u>Description</u>
1	80-00180	1	Hose, drain, with cap and chain
2	80-00178	1	Hook and loop strap, wand holder
3	80-00142	2	Wheel, 3"
4	80-00162	1	Ball Float
5	80-00038	1	Clear lid with mounting plate
6	81-00104	1	Recovery tank, specify model
7	80-00130	1	Hose barb, for 1-1/2" hose
8	88-00010	1	Solution Tank, specify model
9	80-00134	1	Hose Barb/Elbow, 90°
10	80-00150	1	Lid, Solution Tank
11	50-00003	2	Switch, pump & vac
12	50-00004	1	Switch, heat selector
13	50-00153	1	Light, green
15	80-00190	1	Switch plate
16	80-00062	1	Filter, pump inlet
18	80-00027	1	Hose, 1/4" ID X 23.5", pump inlet hose
20	60-00011	1	Pump, 500 psi, complete with bearing
21	60-00016	1	Motor, DC, pump drive, without pump
22	40-00044	2	Hose clamp
23	80-00218	1	Hose, pump to unloader
24	50-00026	1	Hose, pump to pressure gauge, 17"
25	80-00196	1	Quick Disconnect, female
26	51-00004	1	Vacuum motor, 3-stage
27	80-00182	1	Gasket, vacuum, 5" OD
28	80-00120	1	Hose, wire reinforced, 2" X 18"
29	50-00025	1	Fuse Holder, in-line
30	50-00026	1	Fuse, 5 amp
31	80-00181	2	Latch
32	80-00028	1	Pressure gauge for 500 psi
33	80-00187	1	Plate, gauge mount
34	60-00023	1	Pressure regulator/unloader
35	80-00249	1	Quick disconnect, male, 1/4
36	40-00020	2	Washer, high temperature
39	80-00131	2	Caster
40	50-00043	2	Pigtail, power cord
41	50-00042	2	Power cord, 25 ft
44	80-00172	2	Wheel, 12"
45	80-00212	1	Axle
46	40-00036	2	Axle cap
47	88-00012	1	Heater, complete
48	30-00145	1	Repair kit, heater
49	50-00052	2	Terminal block
50	80-00169	1	Hose, heater to outlet QD
52	80-00217	1	Hose, unloader to heater
54	71-00102	1	Base compartment, specify model
55	80-00027	1	Hose 1/2" X 25" from unloader to tank
56	71-00117	1	Manifold for vacuum
57	80-00184	1	Gasket, for vacuum exhaust
58	80-00177	2	Strike, for latch

XTRACT 500

120V



Rev 040312